

CABINETS



Hi! I would like to introduce you to Ohmite's new line of Cabinet Product Assortments. These kits are designed for your lab and prototype needs and they contain our most popular power resistors and heatsinks.

www.BDTIC.com/OHMITE

These sturdy steel cabinets measure 15.5 inches wide, by 10 inches tall, by 6.5 inches deep. They hold 20 plastic drawers which can be subdivided by 2, making a total of 40 slots available.



Wall Mounting slots are on the back, along with a latch to close the cover.



When you open the front cover you will see a key which shows the contents of each drawer so you can easily locate the part you need and keep your samples organized.

FRONT	BACK	FRONT	BACK	FRONT	BACK	FRONT	BACK	FRONT	BACK
TBH25PR050JE POWER: 25* OHMS: 0.05 TOLERANCE: 5% RADIAL 5 TOP SHELF		TBH25P2R00JE POWER: 25* OHMS: 2 TOLERANCE: 5% RADIAL 5 TOP SHELF		TBH25P3R90JE POWER: 25* OHMS: 3.9 TOLERANCE: 5% RADIAL 5 TOP SHELF		TBH25P5R10JE POWER: 25* OHMS: 5.1 TOLERANCE: 5% RADIAL 5 TOP SHELF		TBH25P5R60JE POWER: 25* OHMS: 5.6 TOLERANCE: 5% RADIAL 5 TOP SHELF	
TBH25P7R50JE POWER: 25* OHMS: 7.5 TOLERANCE: 5% RADIAL 5 2ND SHELF		TBH25P10R0JE POWER: 25* OHMS: 10 TOLERANCE: 5% RADIAL 5 2ND SHELF		TBH25P15R0JE POWER: 25* OHMS: 15 TOLERANCE: 5% RADIAL 5 2ND SHELF		TBH25P24R0JE POWER: 25* OHMS: 24 TOLERANCE: 5% RADIAL 5 2ND SHELF		TBH25P51R0JE POWER: 25* OHMS: 51 TOLERANCE: 5% RADIAL 5 2ND SHELF	
TBH25P75R0JE POWER: 25* OHMS: 75 TOLERANCE: 5% RADIAL 5 3RD SHELF		TBH25P100RJE POWER: 25* OHMS: 100 5% RADIAL 5 3RD SHELF		TBH25P240RJE POWER: 25* OHMS: 240 5% RADIAL 5 3RD SHELF		TBH25P470RJE POWER: 25* OHMS: 470 5% RADIAL 5 3RD SHELF		TBH25P1K00JE POWER: 25* OHMS: 1000 5% RADIAL 5 3RD SHELF	
TBH25P2K00JE POWER: 25* OHMS: 2000 5% RADIAL 5 BOTTOM SHELF		EV-T220-38E POWER: N/A OHMS: N/A TOLERANCE: N/A HEATSINK 3 BOTTOM SHELF	EA-T220-38E POWER: N/A OHMS: N/A TOLERANCE: N/A HEATSINK 3 BOTTOM SHELF	EV-T220-51E POWER: N/A OHMS: N/A TOLERANCE: N/A HEATSINK 3 BOTTOM SHELF	EA-T220-51E POWER: N/A OHMS: N/A TOLERANCE: N/A HEATSINK 3 BOTTOM SHELF	EV-T220-64E POWER: N/A OHMS: N/A TOLERANCE: N/A HEATSINK 3 BOTTOM SHELF	EA-T220-64E POWER: N/A OHMS: N/A TOLERANCE: N/A HEATSINK 3 BOTTOM SHELF	WV-T220-101E POWER: N/A OHMS: N/A TOLERANCE: N/A HEATSINK 1 BOTTOM SHELF	WA-T220-101E POWER: N/A OHMS: N/A TOLERANCE: N/A HEATSINK 1 BOTTOM SHELF

To reorder this kit use Part Number CAB-TBHHS
Label P/N: D96109-5

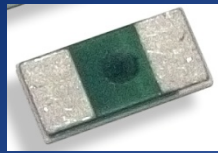
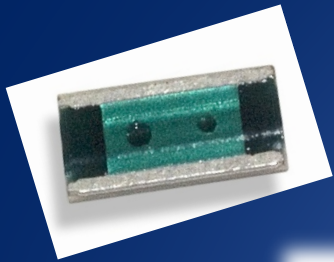
*Properly heatsinked

WWW.OHMITE.COM

OHMITE

www.BDTIC.com/OHMITE

Now then, let's take a look at the different kinds of kits we have introduced in this first batch of Cabinets Part number CAB-SMDMETLFL contains surface mount current sense resistors with metal foil construction from our MCS and FCSL Series'. It has 40 part numbers ranging from 0.001 ohms to 0.05 ohms and power ratings from 1 to 5 watts. All of the resistors are found inside these **little plastic vials** to help you stay better organized.





Some of you current sense resistor fans like a 4-terminal Kelvin connection. For you we have the CAB-LVK containing 40 of our LVK surface mount resistors, again in those little plastic vials.

These also go from 0.001 ohms to 0.05 ohms in 1% and even 0.5% tolerance with power ratings from 0.05 to 2 watts.



Need current sense resistors but still using through hole?
We got you covered with CAB-10AXLCS. It has 20 part
numbers ranging from 2 to 5 watts and from 0.005 to 0.05
ohms, all in 1% tolerance.



www.BDTIC.com/OHMITE

Problems with excess heat? We hear that a lot, which is why we sell so many TO-220 resistors and the heatsinks which mate to them.

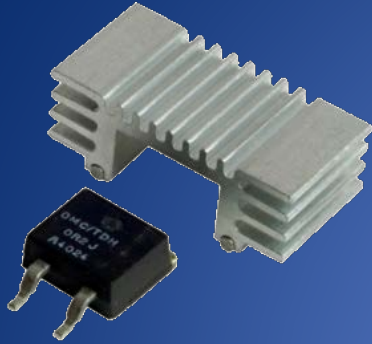
CAB-TBHHS has our 25 watt TO-220 TBH Series and contains 16 resistors (5 of each in vials) with values from 0.05 to 2000 ohms.

CAB-TCHHS has 16 of our 35 watt TO-220 resistors (3 of each) across the same range. Both of these kits also contain 20 heatsinks in 8 varieties to help you keep your resistive elements nice and cool.

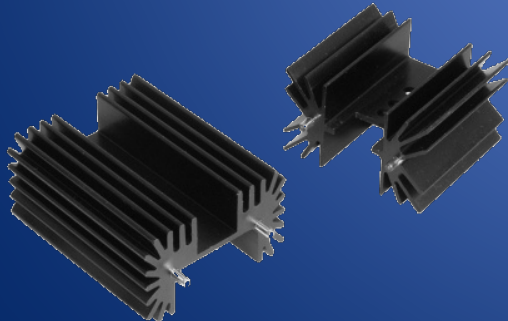
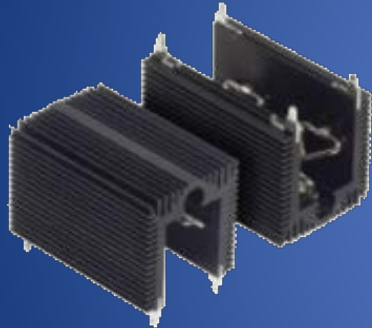


www.BDTIC.com/OHMITE

We know, some of you TO-220 guys take it a step further and use the SMD TO-263 version so we had to make a kit for you too. Of course you might need heatsinks for those so we included 20 of them in both degreased and black anodized finishes. You also get 18 resistor values from 0.10 to 1000 ohms in those little vials we talked about earlier.



Even if you don't use power resistors, **and shame on you if you don't**, we still have a Cabinet for you. Our CAB-HS1 has 21 different kinds of heatsinks for TO-220, TO-247, TO-218 and TO-263 packages. You get a total of 59 parts to use and you can mount anything you want to them. Active devices or even our competitor's product, **though I would be very disappointed if you did that!**



www.BDTIC.com/OHMITE

Don't need power resistors or heatsinks? You are being very difficult aren't you? Well then, for you we have CAB-20 which has no parts at all, so you can populate it with whatever parts you like. We will give you 3 blank templates so you can fill in the contents yourself plus have 2 spare templates in case you change your mind.



www.BDTIC.com/OHMITE

Well, that's it for now. I have to drop off this cabinet. Maybe I can stop by and drop one off to you! We will be back with some new Cabinets for you in a few months. **Keep me in mind until then, OK?**



www.BDTIC.com/OHMITE