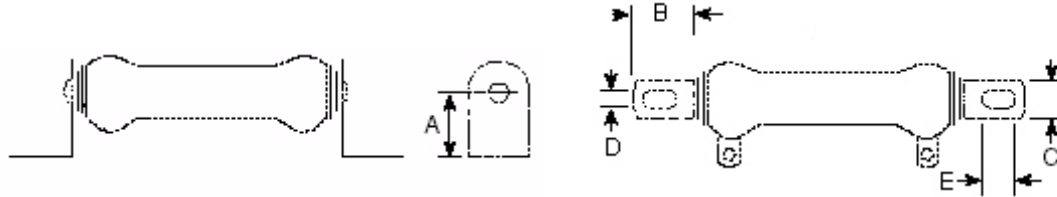
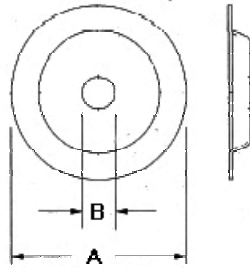


- Features:
- Sturdy plated steel brackets, thru-bolts, centering washers, and insulating washers
  - Brackets provide elongated mounting holes for ease of mounting

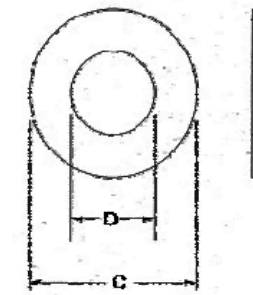


Mounting Brackets Mechanical Specifications						
Resistor Power Rating	A	B	C	D	E	Units
12W	1.00	0.75	0.50	0.219	0.438	inches
	25.40	19.05	12.70	5.56	11.13	mm
25W	1.00	0.75	0.50	0.219	0.438	inches
	25.40	19.05	12.70	5.56	11.13	mm
50W	1.00	0.75	0.50	0.219	0.438	inches
	25.40	19.05	12.70	5.56	11.13	mm
100W	1.00	0.75	0.50	0.219	0.438	inches
	25.40	19.05	12.70	5.56	11.13	mm
150W	1.50	0.875	1.25	0.281	0.563	inches
	38.10	22.23	31.75	7.14	14.30	mm
175W	1.50	0.875	1.25	0.281	0.563	inches
	38.10	22.23	31.75	7.14	14.30	mm
200W	1.50	0.875	1.25	0.281	0.563	inches
	38.10	22.23	31.75	7.14	14.30	mm
225W	1.50	0.875	1.25	0.281	0.563	inches
	38.10	22.23	31.75	7.14	14.30	mm
250W	1.50	0.875	1.25	0.281	0.563	inches
	38.10	22.23	31.75	7.14	14.30	mm
300W	1.50	0.875	1.25	0.281	0.563	inches
	38.10	22.23	31.75	7.14	14.30	mm
400W	1.50	0.875	1.25	0.281	0.563	inches
	38.10	22.23	31.75	7.14	14.30	mm
500W	3.00	1.50	2.50	0.406		inches
	76.20	38.10	63.50	10.30		mm
700W	1.50	0.875	1.25	0.281	0.563	inches
	38.10	22.23	31.75	7.14	14.30	mm
1000W	3.00	1.50	2.50	0.406		inches
	76.20	38.10	63.50	10.30		mm
1300W	3.00	1.50	2.50	0.406		inches
	76.20	38.10	63.50	10.30		mm

### Metal Centering Washer



### Mica Insulating Washer



Bolt and Washers Mechanical Dimensions									
Resistor Power Rating	OD	Core Length	Bolt Length	Bolt No.	A	B	C	D	Units
12W	0.313	1.75	2.25	8.00	0.313				inches
	7.95	44.40	57.15		7.95				
25W	0.56	2.00	2.50	10.00	0.56	0.19	0.75	0.313	inches
	14.30	51.00	63.50		14.22	4.83	19.05	7.95	
50W	0.56	4.00	4.75	10.00	0.56	0.19	0.75	0.313	inches
	14.30	102.00	120.65		14.22	4.83	19.05	7.95	
100W	0.75	6.50	7.00	10.00	0.75	0.19	1.00	0.50	inches
	19.10	165.00	177.80		19.05	4.83	25.40	12.70	
150W	1.10	7.11	7.75	0.25	1.125	0.25	1.25	0.625	inches
	28.00	206.00	196.85		28.575	6.35	31.75	15.875	
175W	1.13	8.50	9.125	0.25	1.125	0.25	1.50	0.75	inches
	28.60	216.00	231.78		28.575	6.35	38.10	19.05	
200W	1.38	8.74	9.25	0.25	1.40	0.25	1.50	0.75	inches
	35.00	222.00	234.95		35.56	6.35	38.10	19.05	
225W	1.125	10.50	11.250	0.25	1.125	0.25	1.50	0.75	inches
	28.60	267.00	285.75		28.575	6.35	38.10	19.05	
250W	1.57	8.74	9.25	0.50	1.57	0.50	2.00	1.00	inches
	40.00	222.00	234.95		39.878	12.70	50.80	25.40	
300W	1.57	10.71	11.125	0.50	1.57	0.50	2.00	1.00	inches
	40.00	272.00	282.58		39.878	12.70	50.80	25.40	
400W	1.57	13.46	14.00	0.50	1.57	0.50	2.00	1.00	inches
	40.00	342.00	355.60		39.878	12.70	50.80	25.40	
500W	2.50	12.00	12.50	0.50	2.50	0.50	3.00	1.50	inches
	63.50	305.00	317.50		63.50	12.70	76.20	38.10	
700W	1.97	18.18	18.75	0.50	1.97	0.50	2.25	1.25	inches
	50.00	462.00	476.25		50.04	12.70	57.15	31.75	
1000W	2.50	20.00	20.50	0.50	2.50	0.50	3.00	1.50	inches
	63.50	508.00	520.70		63.50	12.70	76.20	38.10	
1300W	2.56	26.26	27.00	0.50	2.56	0.50	3.00	1.50	inches
	65.00	667.00	685.80		65.02	12.70	76.20	38.10	