

#### INTRODUCTION:

Adam Tech DVI series Digital Visual Interface connectors are the standard digital interface for flat panels, video graphics cards, monitors, and HDTV units. This series includes DVI-D (Digital), DVI-A (Analog) and DVI-I (Integrated Digital/Analog). Their unique crossing ground blades provide high speed performance at low cost. They are available in Straight or Right Angle PCB mount receptacles and mating male cable connectors. They support a data transfer rate of 4.95Gbps with a dielectric withstanding voltage of 500VAC. Each version features our specially designed contacts which improve signal performance and a zinc alloy shield that reduces electromagnetic interference (EMI).

#### FEATURES:

- Supports Analog and Digital signals
- Offers excellent EMI/RFI performance
- Plug and Play interface
- Supports high bandwidth up to 2.5 GHz analog signal
- Variety of Mating and mounting options

#### MATING CONNECTORS:

Adam Tech DVI connectors and all industry standard DVI connectors.

#### SPECIFICATIONS:

##### Material:

Standard insulator: PA66, Glass filled, rated UL94V-0  
Optional Hi-Temp insulator: Nylon 6T rated UL94V-0  
Insulator Color: White, (Black optional)  
Contacts: Phosphor Bronze  
Shell: Steel, Nickel Plated

##### Contact Plating:

Gold flash over Nickel underplate on mating area,  
Tin over Copper underplate on tails

##### Electrical:

Operating Voltage: 250V AC  
Current Rating: 1.5 Amps max.  
Contact Resistance: 20 mΩ max. initial  
Insulation Resistance: 1000 MΩ min.  
Dielectric Withstanding Voltage: 500V AC for 1 minute

##### Mechanical:

Insertion force: 10 lb max.  
Withdrawal force: 2.2 lb. min.  
Durability: 100 cycles

##### Temperature Rating:

Operating Temperature: -20°C to +85°C  
Soldering process temperature:  
Standard insulator: 235°C  
Hi-Temp insulator: 260°C

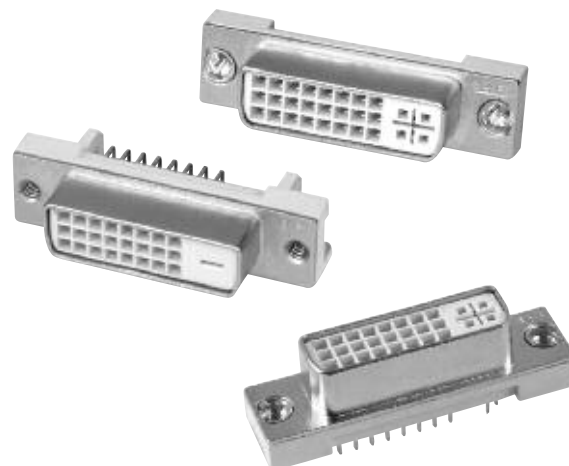
#### PACKAGING:

Anti-ESD plastic trays

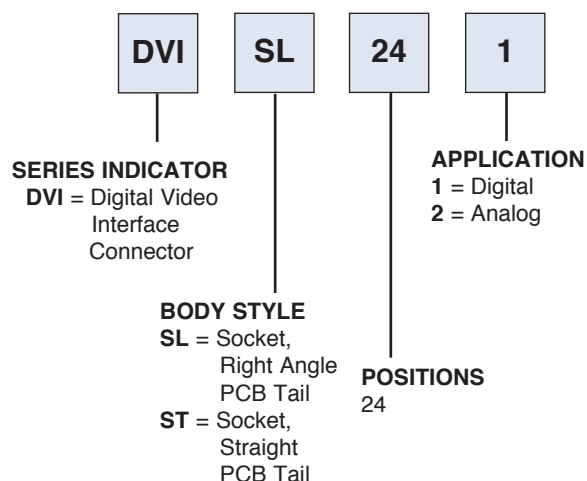
#### APPROVALS AND CERTIFICATIONS:

UL Recognized & CSA Certified, File no. E224053

**HI-TEMP**  
INSULATOR  
AVAILABLE



#### ORDERING INFORMATION



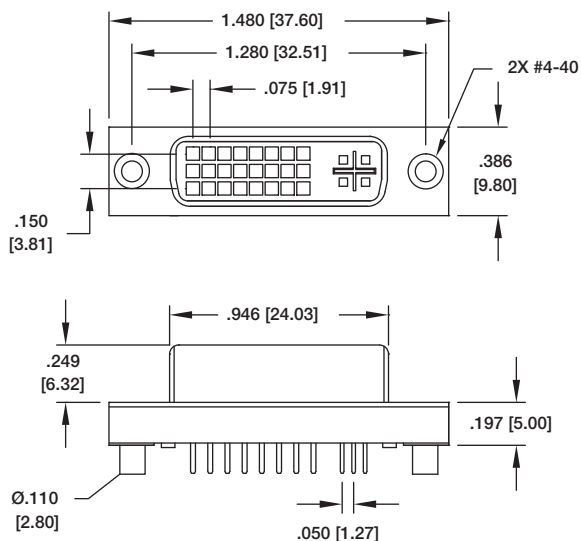
#### OPTIONS:

Add designator(s) to end of part number

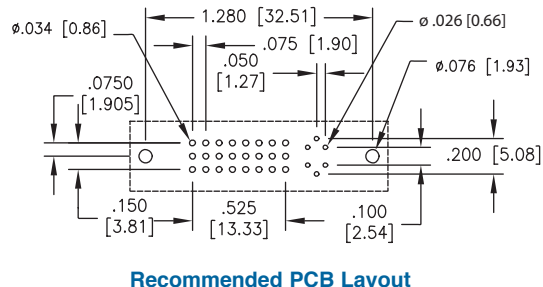
**BK** = Insulator color black

**JS** = Jackscrews Installed

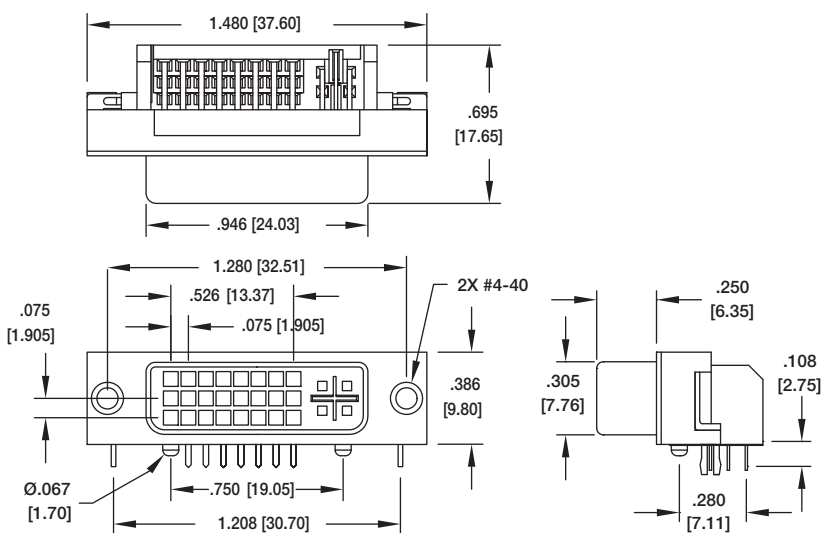
**HT** = Hi-Temp insulator for Hi-Temp soldering processes up to 260°C



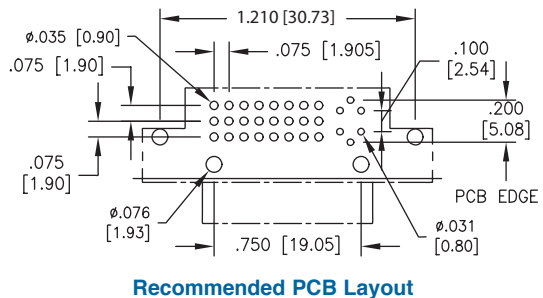
**DVI-ST-24-2**



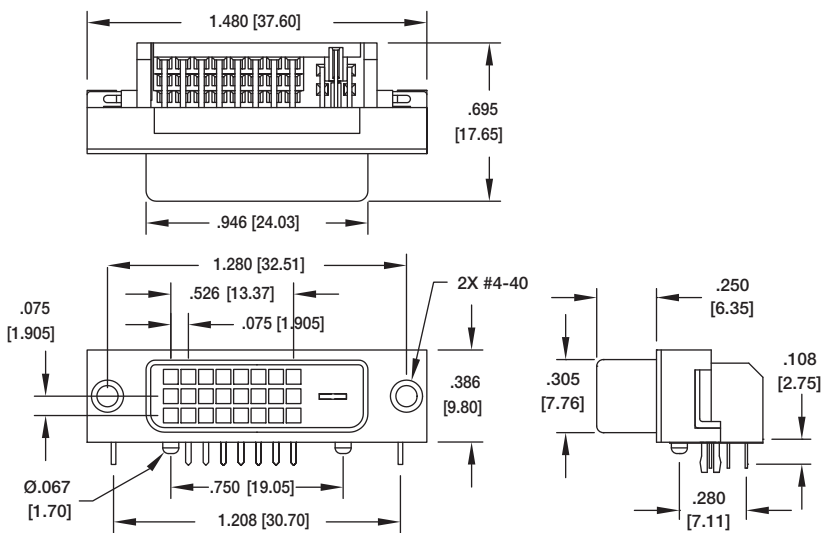
**Recommended PCB Layout**



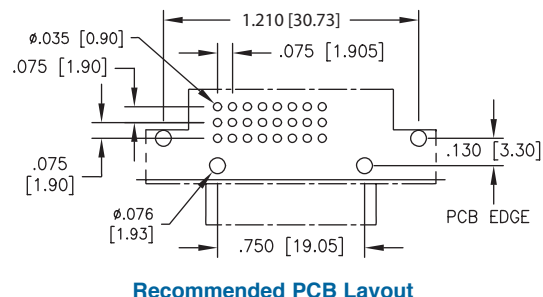
**DVI-SL-24-2**



**Recommended PCB Layout**



**DVI-SL-24-1**



**Recommended PCB Layout**