

### HBHR SERIES

Adam Tech HBHR Series .050" Box Headers are fine pitched, dual row shrouded headers for use with dual row IDC female socket connectors. Our low profile, space saving design has a center slot for the socket's polarization bump. Adam Tech's Box Headers are available in Straight PCB Mount, Right Angle PCB Mount and SMT Mounting. Plating options include choice of Gold, Tin or Selective Gold. SMT versions are manufactured with a Hi-Temp insulator. Additional options include latches and custom pin lengths.

### FEATURES:

Shrouded, insulated connection  
Superior low profile design  
Slot for IDC socket Polarization bump  
Straight PCB, Right Angle PCB and SMT versions  
Gold, Tin or Selective Gold plating  
Options include Elevated types and integral latches  
Hi-Temp insulator available

### MATING RECEPTACLES:

Mates with all industry standard .050" [1.27mm] pitch dual row IDC sockets

### SPECIFICATIONS:

#### Material:

Standard insulator: PBT, glass reinforced, rated UL94V-0  
Optional Hi-Temp insulator: Nylon 6T, rated UL94V-0  
Insulator Color: Black  
Contacts: Brass

#### Plating:

G = Gold flash (30u" optional) over nickel underplate overall  
SG = Gold flash (30u" optional) over nickel underplate on contact area, tin over copper underplate on tails.  
T = Tin over copper underplate overall

#### Electrical:

Operating voltage: 250V AC max.  
Current rating: 1 Amp max  
Contact resistance: 20 mΩ max. initial  
Insulation resistance: 5000 MΩ min.  
Dielectric withstanding voltage: 500V AC for 1 minute

#### Temperature Rating:

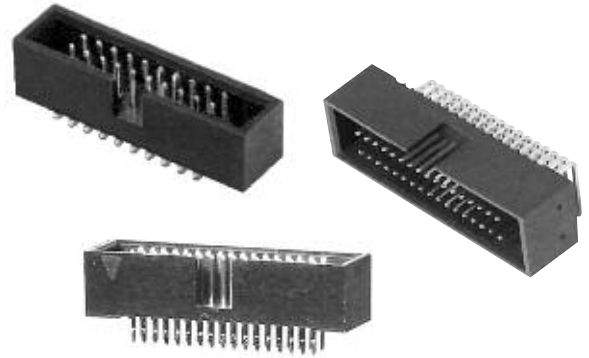
Operating temperature: -40°C to +105°C  
Soldering process temperature: 260°C

#### PACKAGING:

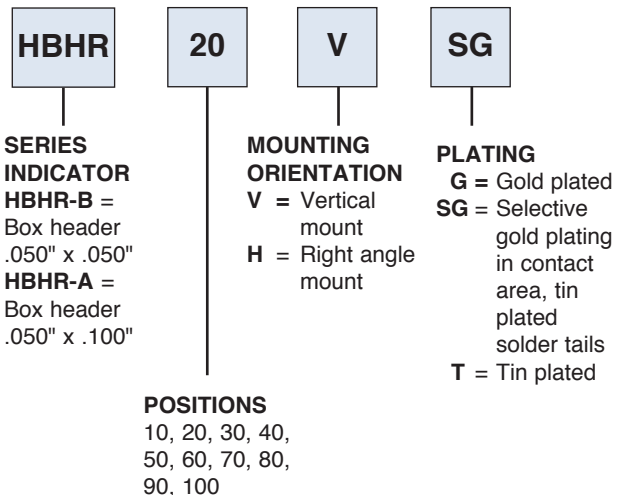
Anti-ESD plastic trays

#### APPROVALS AND CERTIFICATIONS:

UL Recognized & CSA Certified, File no. E224053



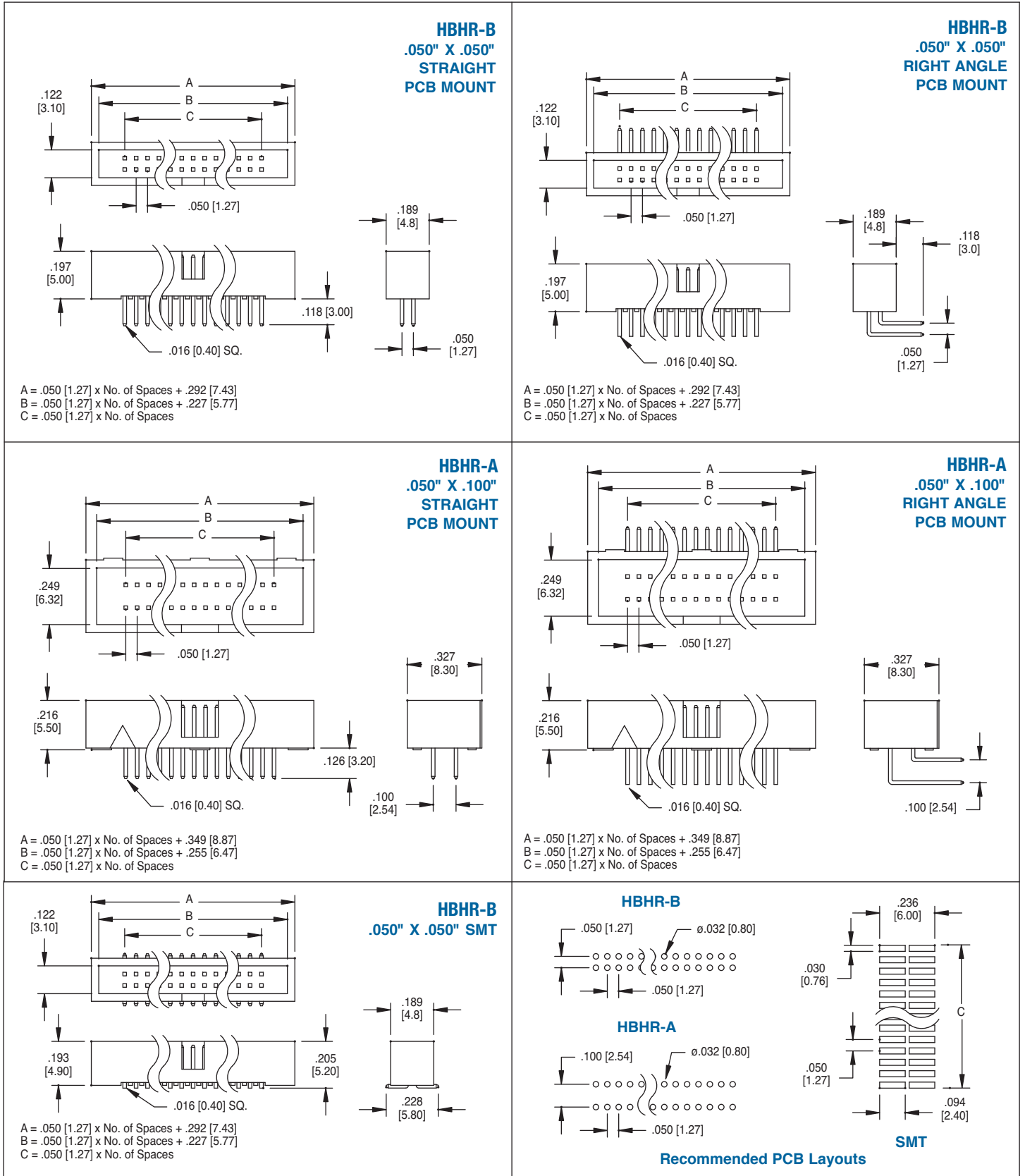
### ORDERING INFORMATION

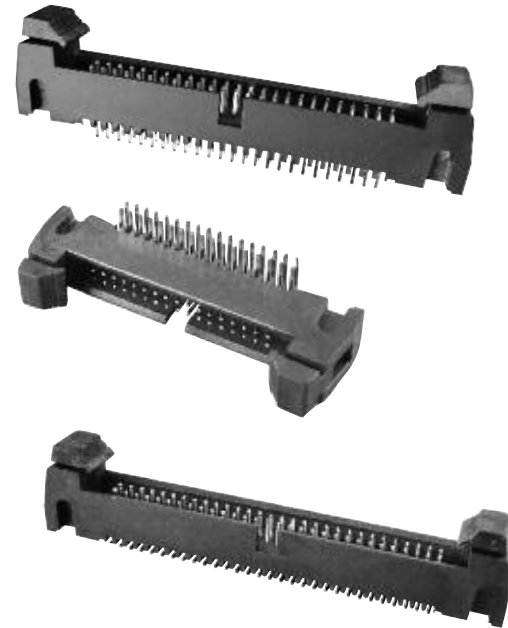


This series is available in an elevated version similar to our BHRE Series as shown on pgs. 302-303

#### OPTIONS:

Add designator(s) to end of part number  
**30** = 30 μin gold plating in contact area  
**SMT** = Surface mount leads with Hi-Temp insulator for Hi-Temp soldering processes up to 260°C  
**HT** = Hi-Temp insulator for Hi-Temp soldering processes up to 260°C (Add this option for thru-hole products only).  
*All SMT products are manufactured with Hi-Temp insulators*





**INTRODUCTION:**

Adam Tech HMHR Series .050" Latch Headers are dual row, PCB mounted, shrouded headers with latches for use with dual row IDC female socket connectors. In addition to providing a shock and vibration proof connection the locking latches also act as ejectors to remove the mating socket. Our low profile, space saving design has a center slot for the socket's polarization bump. Adam Tech's Latch Headers are available in Straight PCB Mount, Right Angle PCB and SMT Mounting. Plating options include choice of Gold, Tin or Selective Gold

**FEATURES:**

- Integral Latches provide Shock and Vibration Proof connection
- Slot for IDC socket Polarization bump
- Straight PCB, Right Angle PCB and SMT versions
- Gold, Tin or Selective Gold plating
- Elevated option available
- Hi-Temp insulator available

**MATING SOCKETS:**

.050" X .050" & .050" X .100" Dual row IDC sockets

**SPECIFICATIONS:**

**Material:**

Insulator: PBT, glass reinforced, rated UL94V-0  
Insulator Color: Black (Gray optional)  
Contacts: Brass

**Plating:**

U = Gold flash (30u" optional) over nickel underplate overall  
SG = Gold flash (30u" optional) over nickel on contact area, Tin over copper underplate on tails.  
T = Tin over copper underplate overall

**Electrical:**

Operating voltage: 250V AC max.  
Current rating: 1 Amp max  
Contact resistance: 20 mΩ max. initial  
Insulation resistance: 5000 MΩ min.  
Dielectric withstanding voltage: 500V AC for 1 minute

**Mechanical:**

Mating durability: 500 Cycles min.

**Temperature Rating:**

Operating temperature: -55°C to +105°C

**PACKAGING:**

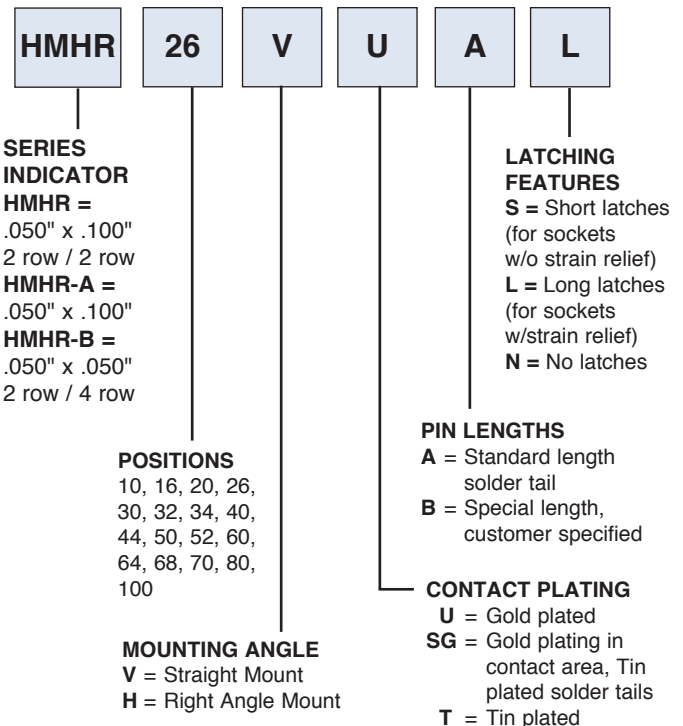
Anti-ESD plastic trays

**SAFETY AGENCY APPROVALS:**

UL Recognized & CSA Certified, File no. E224053



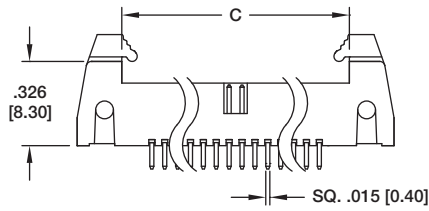
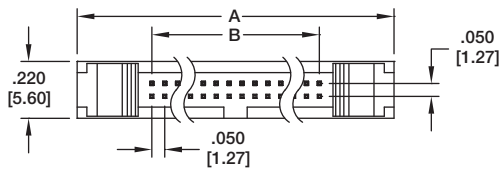
**ORDERING INFORMATION**



**OPTIONS:**

- Add designator(s) to end of part number
- SMT = Surface mount leads Dual row with Hi-Temp insulator
- HT = High-temp insulator for high-temp soldering processes

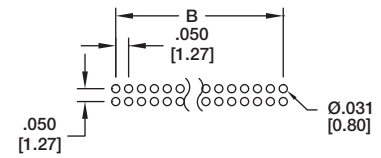
**HMHR-A**  
**.050" X .050"**  
**STRAIGHT PCB MOUNT**



A = .050 [1.27] X No. of Spaces + .233 [5.92]  
 B = .050 [1.27] X No. of Spaces  
 C = .050 [1.27] X No. of Spaces + .621 [15.77]

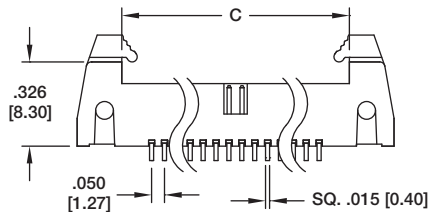
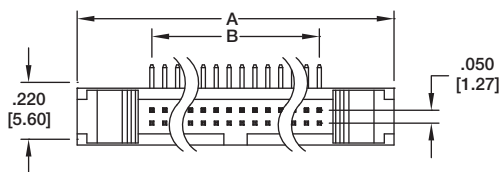


**HMHR-A-50-VUAS**

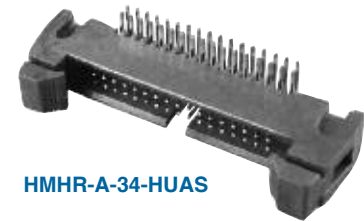


**Recommended PCB Layout**

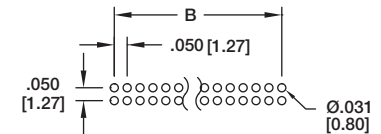
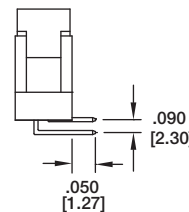
**HMHR-A**  
**.050" X .050"**  
**RIGHT ANGLE PCB MOUNT**



A = .050 [1.27] X No. of Spaces + .233 [5.92]  
 B = .050 [1.27] X No. of Spaces  
 C = .050 [1.27] X No. of Spaces + .621 [15.77]

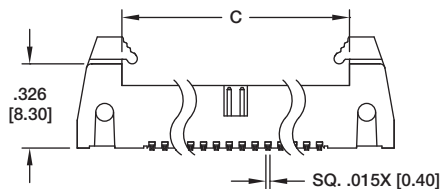
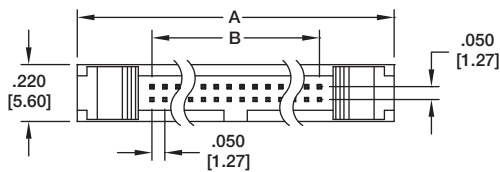


**HMHR-A-34-HUAS**

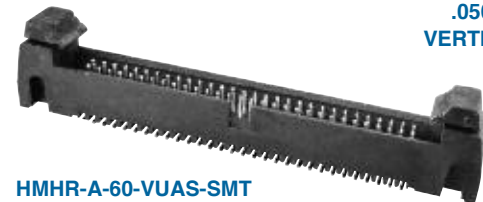


**Recommended PCB Layout**

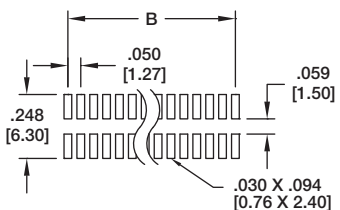
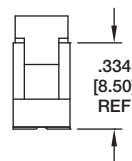
**HMHR-A**  
**.050" X .050"**  
**VERTICAL SMT**



A = .050 [1.27] X No. of Spaces + .233 [5.92]  
 B = .050 [1.27] X No. of Spaces  
 C = .050 [1.27] X No. of Spaces + .621 [15.77]

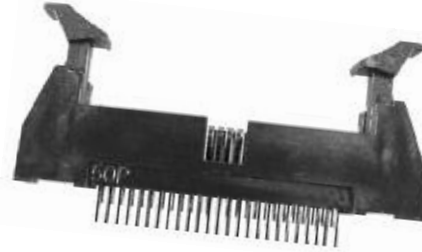
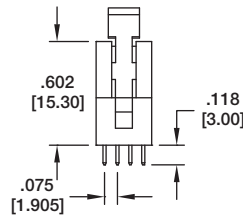
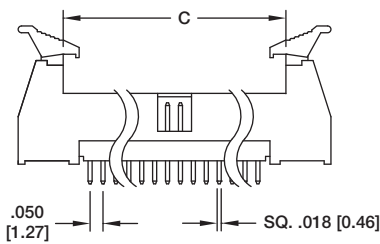
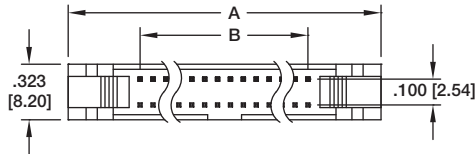


**HMHR-A-60-VUAS-SMT**



**Recommended PCB Layout**

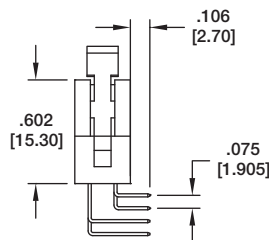
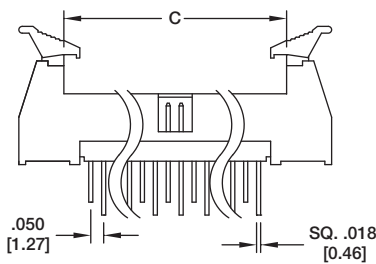
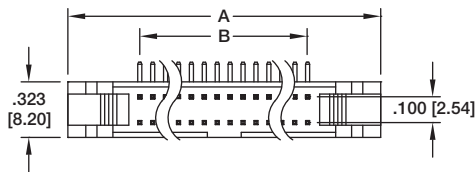
**HMHR-B**  
**.050" X .100"**  
**STRAIGHT PCB MOUNT**



**HMHR-50-VUAL**

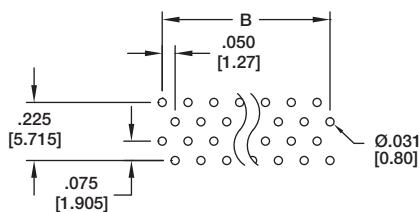
A = .050 [1.27] X No. of Spaces + .306 [7.78]  
 B = .050 [1.27] X No. of Spaces  
 C = .050 [1.27] X No. of Spaces + .829 [21.07]

**HMHR-B**  
**.050" X .100" 4 ROW**  
**RIGHT ANGLE PCB MOUNT**



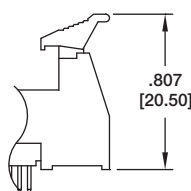
**HMHR-60-HUAL**

A = .050 [1.27] X No. of Spaces + .306 [7.78]  
 B = .050 [1.27] X No. of Spaces  
 C = .050 [1.27] X No. of Spaces + .829 [21.07]

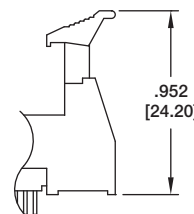


**Recommended PCB Layout**

**Latch Options**

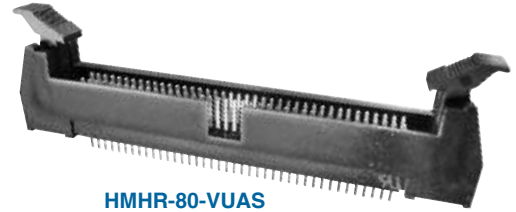
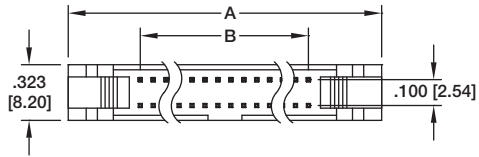


Header with Short Ejector/Latch for Sockets without Strain Reliefs

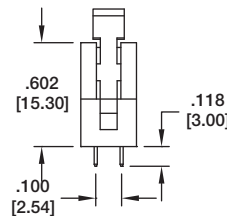
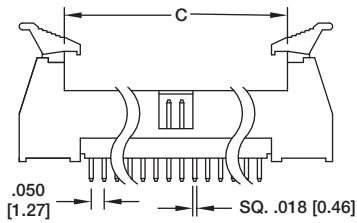


Header with Long Ejector/Latch for Sockets with Strain Reliefs

**HMHR**  
**.050" X .100"**  
**STRAIGHT PCB MOUNT**

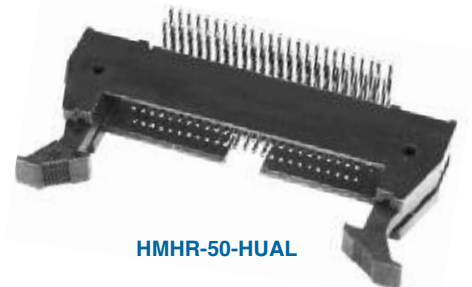
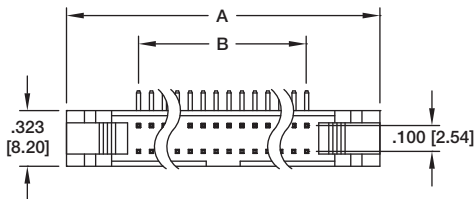


**HMHR-80-VUAS**

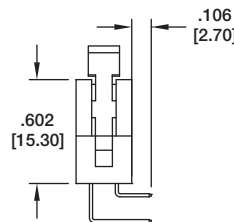
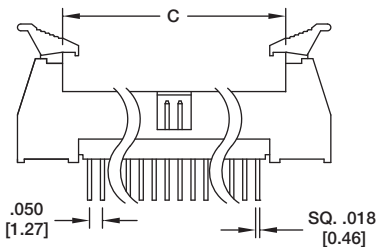


A = .050 [1.27] X No. of Spaces + .306 [7.78]  
 B = .050 [1.27] X No. of Spaces  
 C = .050 [1.27] X No. of Spaces + .829 [21.07]

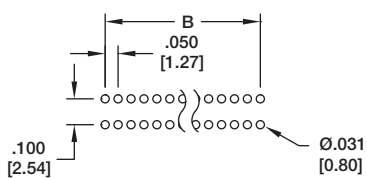
**HMHR**  
**.050" X .100"**  
**RIGHT ANGLE PCB MOUNT**



**HMHR-50-HUAL**

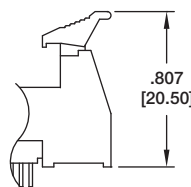


A = .050 [1.27] X No. of Spaces + .306 [7.78]  
 B = .050 [1.27] X No. of Spaces  
 C = .050 [1.27] X No. of Spaces + .829 [21.07]

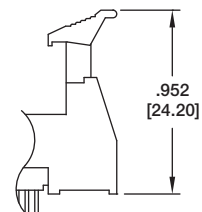


**Recommended PCB Layout**

**Latch Options**



Header with Short Ejector/Latch for Sockets without Strain Reliefs



Header with Long Ejector/Latch for Sockets with Strain Reliefs



### INTRODUCTION:

Adam Tech 2BHR Series 2.0mm Box Headers are dual row shrouded headers for use with dual row IDC female socket connectors. Our low profile, space saving design has a center slot for the socket's polarization bump. Adam Tech's Box Headers are available in Straight PCB Mount, Right Angle PCB Mount and SMT Mounting. Plating options include choice of Gold, Tin or Selective Gold. SMT versions are manufactured with a Hi-Temp insulator. Additional options include latches and custom pin lengths.

### FEATURES:

- Shrouded, insulated connection
- Superior low profile design
- Slot for IDC socket Polarization bump
- Straight PCB, Right Angle PCB and SMT versions
- Gold, Tin or Selective Gold plating
- Options include Elevated types and integral latches
- Hi-Temp insulator available

### MATING SOCKETS:

Adam Tech .079" [2.0mm] X .079" [2.0mm] dual row IDC sockets

### SPECIFICATIONS:

#### Material:

Standard insulator: PBT, rated UL94V-0  
Optional Hi-Temp insulator: Nylon 6T, rated UL94V-0  
Insulator Color: Black  
Contacts: Brass

#### Plating:

U = Gold flash (30u" optional) over nickel underplate  
SG = Gold flash (30u" optional) over nickel underplate on contact area, tin over copper underplate on tails.  
T = Tin over copper underplate overall

#### Electrical:

Operating voltage: 250V AC max.  
Current rating: 1 Amp max  
Contact resistance: 20 mΩ max. initial  
Insulation resistance: 5000 MΩ min.  
Dielectric withstanding voltage: 1000V AC for 1 minute

#### Mechanical:

Mating durability: 500 cycles min.

#### Temperature Rating:

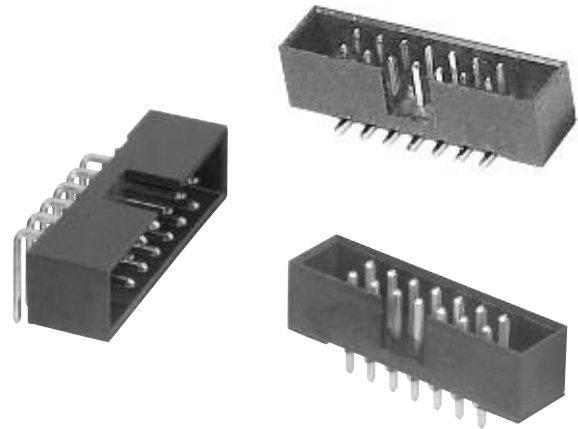
Operating temperature: -40°C to +105°C  
Soldering process temperature:  
Standard insulator: 235°C  
Hi-Temp insulator: 260°C

#### PACKAGING:

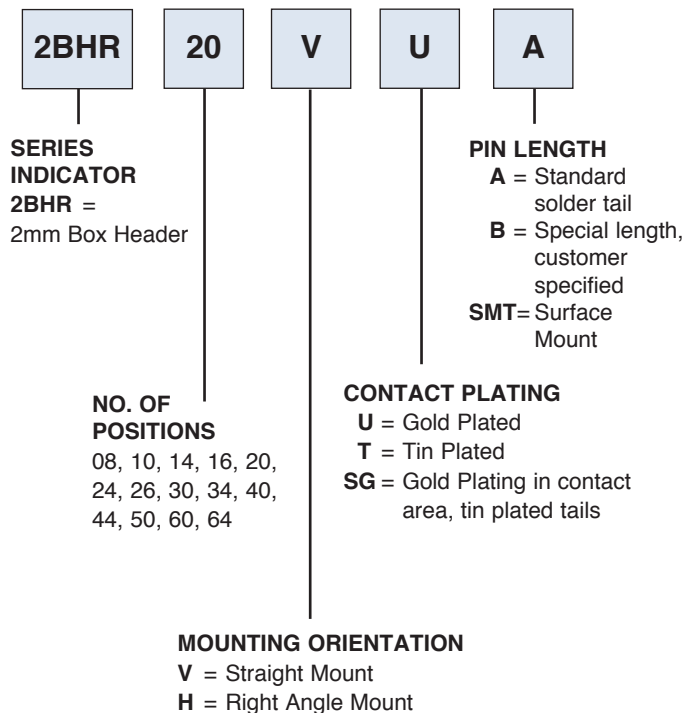
Anti-ESD plastic trays

#### APPROVALS AND CERTIFICATIONS:

UL Recognized & CSA Certified,  
File no. E224053



### ORDERING INFORMATION



This series is available in an elevated version similar to our BHRE Series as shown on pgs. 302-303

#### OPTIONS:

Add designator(s) to end of part number  
**30** = 30 μin gold plating in contact area  
**GY** = Gray color insulator  
**HT** = Hi-Temp insulator for Hi-Temp soldering processes up to 260°C (Add this option for thru-hole products only. All SMT products are manufactured with Hi-Temp insulators)

<p> <math>A = .079 [2.00] \times \text{No. of Spaces} + .362 [9.20]</math>  <math>B = .079 [2.00] \times \text{No. of Spaces}</math> </p>	<p><b>2BHR-STRAIGHT</b></p> <p><b>2BHR-14-VUA</b></p> <p><b>Recommended PCB Layout</b></p>
<p> <math>A = .079 [2.00] \times \text{No. of Spaces} + .362 [9.20]</math>  <math>B = .079 [2.00] \times \text{No. of Spaces}</math> </p>	<p><b>2BHR-RIGHT ANGLE</b></p> <p><b>2BHR-14-HUA</b></p> <p><b>Recommended PCB Layout</b></p>
<p> <math>A = .079 [2.00] \times \text{No. of Spaces} + .362 [9.20]</math>  <math>B = .079 [2.00] \times \text{No. of Spaces}</math> </p>	<p><b>2BHR-SMT</b></p> <p><b>2BHR-14-VUA-SMT</b></p> <p><b>Recommended PCB Layout</b></p>



### INTRODUCTION:

Adam Tech 2MHR Series 2mm Latch Headers are dual row, PCB mounted, shrouded headers with latches for use with dual row IDC female socket connectors. In addition to providing a shock and vibration proof connection the locking latches also act as ejectors to remove the mating socket. Our low profile, space saving design has a center slot for the socket's polarization bump. Adam Tech's Latch Headers are available in Straight PCB Mount, Right Angle PCB and SMT Mounting. Plating options include choice of Gold, Tin or Selective Gold

### FEATURES:

Integral Latches provide Shock and Vibration Proof connection  
Slot for IDC socket Polarization bump  
Straight PCB, Right Angle PCB and SMT versions  
Gold, Tin or Selective Gold plating  
Elevated option available  
Hi-Temp insulator available

### MATING SOCKETS:

2mm X 2mm Dual row IDC sockets

### SPECIFICATIONS:

#### Material:

Insulator: PBT, glass reinforced, rated UL94V-0  
Insulator Color: Black (Gray optional)  
Contacts: Brass

#### Plating:

U = Gold flash (30u" optional) over nickel underplate overall  
SG = Gold flash (30u" optional) over nickel on contact area, Tin over copper underplate on tails.  
T = Tin over copper underplate overall

#### Electrical:

Operating voltage: 250V AC max.  
Current rating: 1 Amp max  
Contact resistance: 20 mΩ max. initial  
Insulation resistance: 5000 MΩ min.  
Dielectric withstanding voltage: 1000V AC for 1 minute

#### Mechanical:

Mating durability: 500 Cycles min.

#### Temperature Rating:

Operating temperature: -40°C to +105°C

#### PACKAGING:

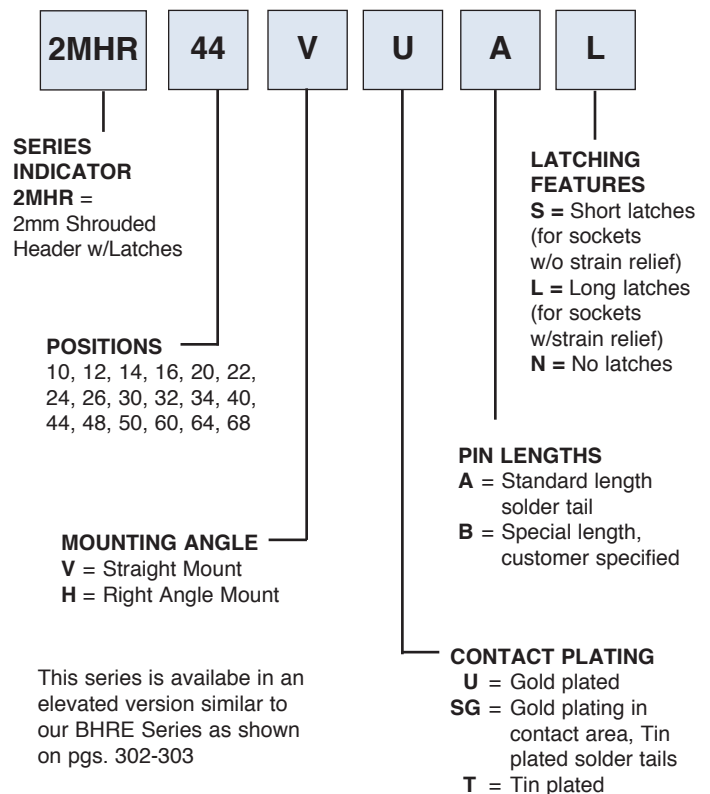
Anti-ESD plastic trays

#### SAFETY AGENCY APPROVALS:

UL Recognized & CSA Certified, File no. E224053



### ORDERING INFORMATION



This series is available in an elevated version similar to our BHRE Series as shown on pgs. 302-303

#### OPTIONS:

Add designator(s) to end of part number

HT = High-temp insulator for high-temp soldering processes

LATCH DIMENSIONS		
	X	Y
LONG LATCH	.775 [19.70]	.452 [11.50]
SHORT LATCH	.665 [16.90]	.342 [8.70]

$A = .079 [2.00] \times \text{No. of Spaces} + .697 [17.70]$   
 $B = .079 [2.00] \times \text{No. of Spaces}$

**2MHR STRAIGHT PCB MOUNT**

**2MHR-34-VUAS**

**Recommended PCB Layout**

---

LATCH DIMENSIONS		
	X	Y
LONG LATCH	.775 [19.70]	.452 [11.50]
SHORT LATCH	.665 [16.90]	.342 [8.70]

$A = .079 [2.00] \times \text{No. of Spaces} + .697 [17.70]$   
 $B = .079 [2.00] \times \text{No. of Spaces}$

**2MHR RIGHT ANGLE PCB MOUNT**

**2MHR-60-HUAS**

**Recommended PCB Layout**

---

LATCH DIMENSIONS		
	X	Y
LONG LATCH	.775 [19.70]	.452 [11.50]
SHORT LATCH	.665 [16.90]	.342 [8.70]

$A = .079 [2.00] \times \text{No. of Spaces} + .697 [17.70]$   
 $B = .079 [2.00] \times \text{No. of Spaces}$

**2MHR VERTICAL SMT MOUNT**

**2MHR-40-HUAS**

**Recommended PCB Layout**

### INTRODUCTION:

Adam Tech BHR Series .100" Box Headers are a dual row shrouded header for use with dual row IDC female socket connectors. Our low profile, space saving design has a center slot for the socket's polarization bump. Adam Tech's Box Headers are available in Straight PCB Mount, Right Angle PCB Mount and SMT Mounting. Plating options include choice of Gold, Tin or Selective Gold. SMT versions are manufactured with a Hi-Temp insulator. Additional options include latches and custom pin lengths.

### FEATURES:

- Superior low profile design
- Slot for IDC socket Polarization bump
- Straight PCB, Right Angle PCB and SMT versions
- Gold, Tin or Selective Gold plating
- Options include Elevated types and integral latches
- Hi-Temp insulator available

### MATING SOCKETS:

Adam Tech .100" X .100" dual row IDC sockets

### SPECIFICATIONS:

#### Material:

Insulator: PBT, glass reinforced, rated UL94V-0  
Optional Hi-Temp insulator: Nylon 6T, rated UL94V-0  
Insulator Color: Black (Gray optional)  
Contacts: Brass

#### Plating:

U = Gold flash (30u" optional) over nickel underplate  
SG = Gold flash (30u" optional) over nickel underplate on contact area, tin over copper underplate on tails.  
T = Tin over copper underplate overall

#### Electrical:

Operating voltage: 250V AC max.  
Current rating: 1 Amp max  
Contact resistance: 20 mΩ max. initial  
Insulation resistance: 5000 MΩ min.  
Dielectric withstanding voltage: 1000V AC for 1 minute

#### Mechanical:

Mating durability: 500 cycles min.

#### Temperature Rating:

Operating temperature: -40°C to +105°C

### PACKAGING:

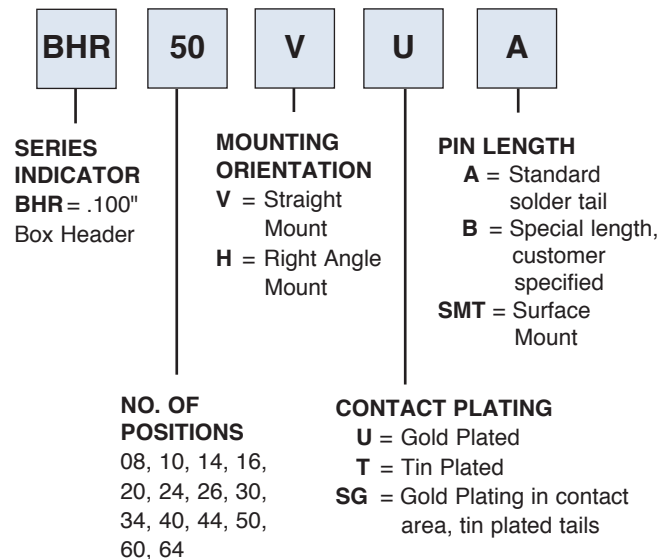
Anti-ESD plastic trays

### SAFETY AGENCY APPROVALS:

UL Recognized & CSA Certified, File no. E224053



### ORDERING INFORMATION



### OPTIONS:

Add designator(s) to end of part number  
**LL** = Box header with long latches  
**SL** = Box header with short latches  
**30** = 30 μin gold plating in contact area  
**GY** = Gray color insulator  
**HT** = Hi-Temp insulator for Hi-Temp soldering processes up to 260°C (Add this option for thru-hole products only.  
*All SMT products are manufactured with Hi-Temp insulators*)

A = .100 [2.54] X No. of Positions / 2 + .300 [7.62]  
 B = .100 [2.54] X No. of Positions / 2 + .200 [5.08]  
 C = .100 [2.54] X No. of Spaces

**BHR**  
STRAIGHT PCB MOUNT

**BHR-34-VUA**

**Recommended PCB Layout**

A = .100 [2.54] X No. of Positions / 2 + .300 [7.62]  
 B = .100 [2.54] X No. of Positions / 2 + .200 [5.08]  
 C = .100 [2.54] X No. of Spaces

**BHR**  
RIGHT ANGLE PCB MOUNT

**BHR-34-HUA**

**Recommended PCB Layout**

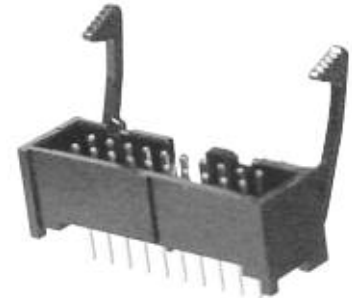
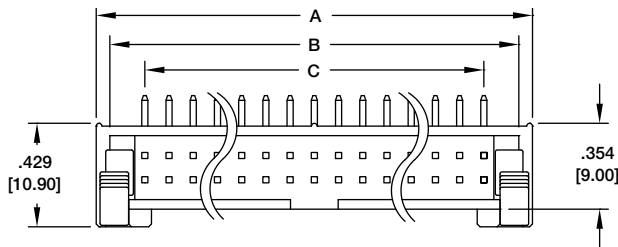
A = .100 [2.54] X No. of Positions / 2 + .300 [7.62]  
 B = .100 [2.54] X No. of Positions / 2 + .200 [5.08]  
 C = .100 [2.54] X No. of Spaces

**BHR**  
SURFACE MOUNT

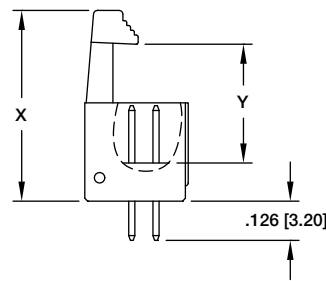
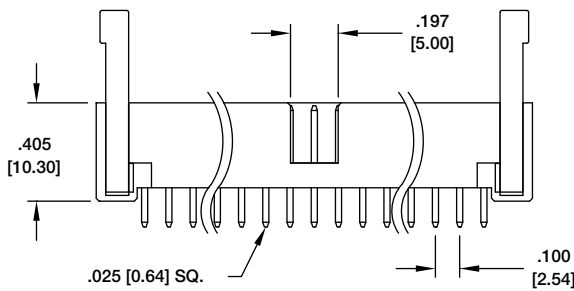
**BHR-30-VSG-SMT**

**Recommended PCB Layout**

## BHR STRAIGHT MOUNT BOX HEADER WITH LATCHES

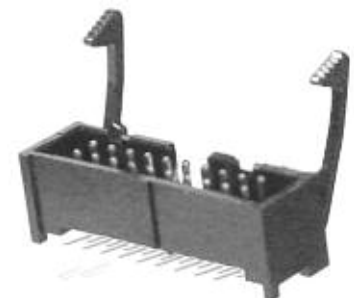
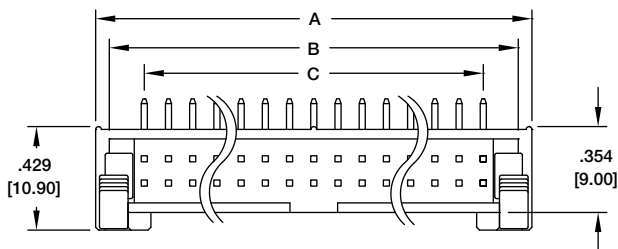


BHR-34-VUA-LL

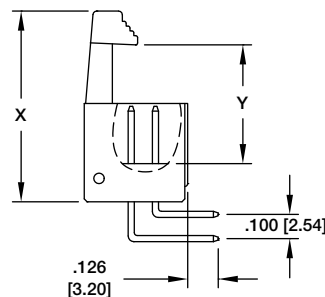
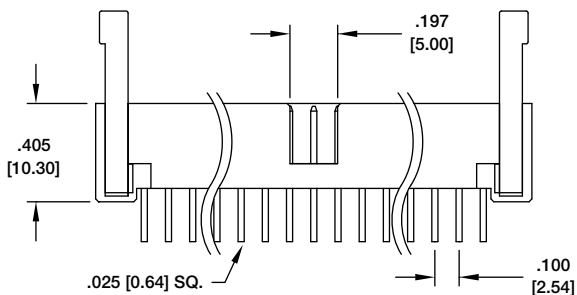


A = .100 [2.54] X No. of Positions / 2 + .301  
 B = .100 [2.54] X No. of Positions / 2 + .189  
 C = .100 [2.54] X No. of Positions / 2

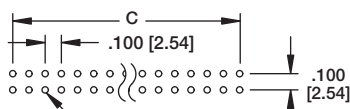
## BHR RIGHT ANGLE MOUNT BOX HEADER WITH LATCHES



BHR-34-HUA-LL



A = .100 [2.54] X No. of Positions / 2 + .301  
 B = .100 [2.54] X No. of Positions / 2 + .189  
 C = .100 [2.54] X No. of Positions / 2



Recommended PCB Layout

LATCH TYPE	DIMENSIONS	
	X	Y
LONG LATCH (-LL)	1.035 [26.30]	.575 [14.60]
SHORT LATCH (-SL)	.901 [22.90]	.417 [10.60]

## INTRODUCTION:

Adam Tech BHRE Series Elevated Box Headers provide all of the advantages of our standard Box Headers such as our Low Profile design, snug fit & polarized mating but have additional plastic insulators in place to stabilize rows of pins for stacking applications. This series is available in Straight, Right Angle & SMT mounting with standard or customer specified Stacking Heights and PCB tail lengths.

## FEATURES:

Elevated for Stacking applications  
Low Profile design  
Straight, Right Angle & SMT mounting options  
Standard or customer specified Stacking Heights & PCB tail lengths

## MATING SOCKETS:

Adam Tech .100" X .100" dual row IDC sockets

## SPECIFICATIONS:

### MATERIAL:

Insulator: PBT, glass reinforced, rated UL94V-0  
Optional Hi-Temp insulator: Nylon 6T, rated UL94V-0  
Insulator Color: Black (Gray optional)  
Contacts: Brass

### PLATING:

U = Gold flash (30u" optional) over nickel underplate  
SG = Gold flash (30u" optional) over nickel underplate on contact area, tin over copper underplate on tails.  
T = Tin over copper underplate overall

### ELECTRICAL:

Operating voltage: 250V AC max.  
Current rating: 1 Amp max  
Contact resistance: 20 mΩ max. initial  
Insulation resistance: 5000 MΩ min.  
Dielectric withstanding voltage: 1000V AC for 1 minute

### MECHANICAL:

Mating durability: 500 cycles min.

### TEMPERATURE RATING:

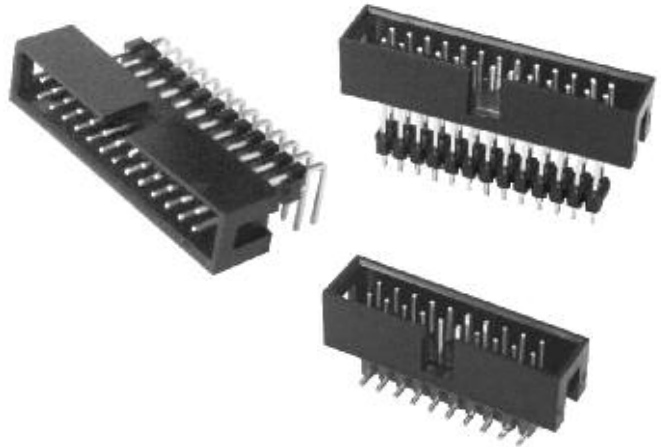
Operating temperature: -40°C to +105°C

### PACKAGING:

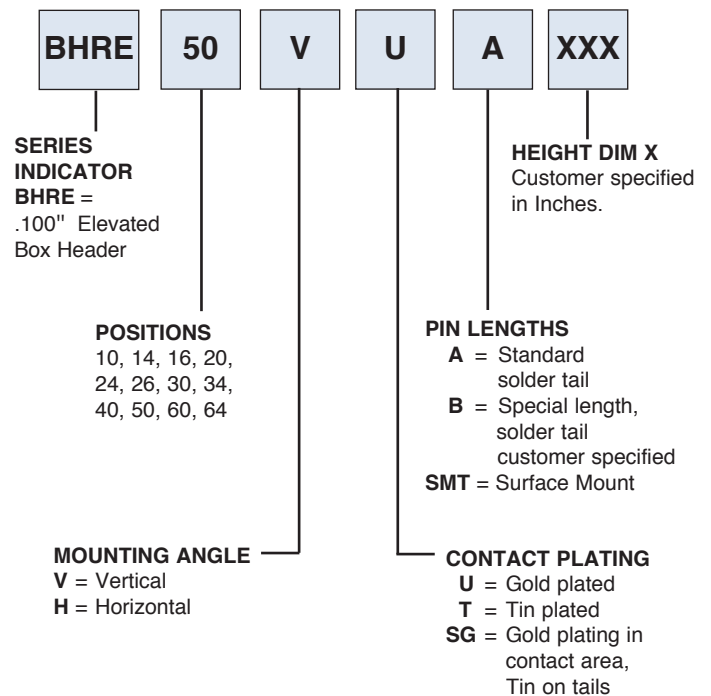
Anti-ESD plastic trays

### SAFETY AGENCY APPROVALS:

UL Recognized & CSA Certified, File no. E224053



## ORDERING INFORMATION



### OPTIONS:

Add designator(s) to end of part number

**30** = 30u" Gold on contact area

**GY** = Gray color insulator

**HT** = Hi-Temp insulator for Hi-Temp soldering processes up to 260°C (Add this option for thru-hole products only.)

All SMT products are manufactured with Hi-Temp insulators)



**BHRE  
ELEVATED STRAIGHT  
PCB MOUNT**

$A = .100 [2.54] \times \text{No. of Positions} / 2 + .300 [7.62]$   
 $B = .100 [2.54] \times \text{No. of Positions} / 2 + .212 [5.40]$   
 $C = .100 [2.54] \times \text{No. of Spaces}$

.025 [0.64] SQ.  
 .356 [9.05]  
 .177 [4.50]  
 .346 [8.80]  
 .346 [8.80]  
 .130 [3.30]  
 .100 [2.54]  
 .100 [2.54]  
 $\phi .040 [1.02]$

**BHRE-26-VUA-477**

$C$   
 .100 [2.54]  
 .100 [2.54]  
 $\phi .040 [1.02]$

**BHRE  
ELEVATED RIGHT ANGLE  
PCB MOUNT**

$A = .100 [2.54] \times \text{No. of Positions} / 2 + .300 [7.62]$   
 $B = .100 [2.54] \times \text{No. of Positions} / 2 + .212 [5.40]$   
 $C = .100 [2.54] \times \text{No. of Spaces}$

.025 [0.64] SQ.  
 .133 [3.40]  
 .356 [9.05]  
 .177 [4.50]  
 .346 [8.80]  
 .356 [9.05]  
 .346 [8.80]  
 .153 [3.90]  
 .100 [2.54]  
 .218 [5.55]  
 $\phi .040 [1.02]$

**BHRE-26-HUA-477**

$C$   
 .100 [2.54]  
 .100 [2.54]  
 $\phi .040 [1.02]$

**BHRE  
ELEVATED SMT**

$A = .100 [2.54] \times \text{No. of Positions} / 2 + .300 [7.62]$   
 $B = .100 [2.54] \times \text{No. of Positions} / 2 + .212 [5.40]$   
 $C = .100 [2.54] \times \text{No. of Spaces}$

.025 [0.64] SQ.  
 .346 [8.80]  
 .177 [4.50]  
 .346 [8.80]  
 .374 [9.50]  
 .100 [2.54]

**BHRE-20-VU-SMT-477**

$C$   
 .100 [2.54]  
 .413 [10.50]  
 .060 [1.50]  
 .039 [1.00]

**INTRODUCTION:**

Adam Tech MHR Series .100" pitch Latch Headers are dual row, PCB mounted, shrouded headers with latches for use with dual row IDC female socket connectors. In addition to providing a shock and vibration proof connection the locking latches also act as ejectors to remove the mating socket. Our low profile, space saving design has a center slot for the socket's polarization bump. Adam Tech's Latch Headers are available in Straight PCB Mount, Right Angle PCB and SMT Mounting. Plating options include choice of Gold, Tin or Selective Gold

**FEATURES:**

Integral Latches provide Shock and Vibration Proof connection  
Slot for IDC socket Polarization bump  
Straight PCB, Right Angle PCB and SMT versions  
Gold, Tin or Selective Gold plating  
Elevated option available  
Hi-Temp insulator available

**MATING SOCKETS:**

.100" X .100" Dual row IDC sockets

**SPECIFICATIONS:**

**Material:**

Insulator: PBT, glass reinforced, rated UL94V-0  
Insulator Color: Black (Gray optional)  
Contacts: Brass

**Plating:**

U = Gold flash (30u" optional) over nickel underplate overall  
SG = Gold flash (30u" optional) over nickel on contact area, Tin over copper underplate on tails.  
T = Tin over copper underplate overall

**Electrical:**

Operating voltage: 250V AC max.  
Current rating: 3 Amps max  
Contact resistance: 20 mΩ max. initial  
Insulation resistance: 5000 MΩ min.  
Dielectric withstanding voltage: 1000V AC for 1 minute

**Mechanical:**

Mating durability: 500 Cycles min.

**Temperature Rating:**

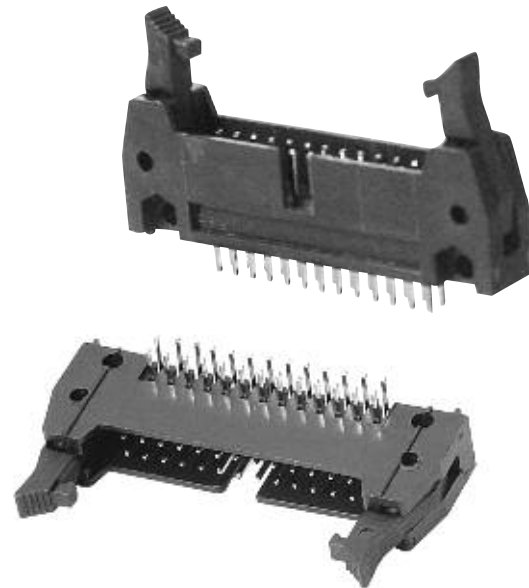
Operating temperature: -40°C to +105°C

**PACKAGING:**

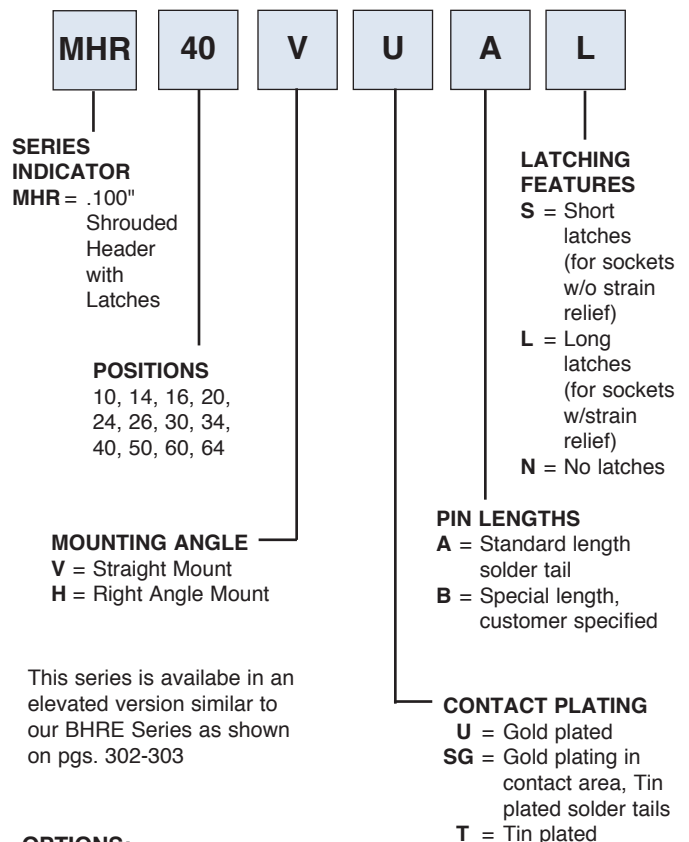
Anti-ESD plastic trays

**SAFETY AGENCY APPROVALS:**

UL Recognized & CSA Certified, File no. E224053



**ORDERING INFORMATION**



This series is available in an elevated version similar to our BHRE Series as shown on pgs. 302-303

**OPTIONS:**

Add designator(s) to end of part number

GY = Gray color insulator

HT = High-temp insulator for high-temp soldering processes

**MHR STRAIGHT PCB MOUNT**

A = .100 [2.54] x No. of Spaces + .860 [21.84]  
 B = .100 [2.54] x No. of Spaces + .460 [11.68]  
 C = .100 [2.54] x No. of Spaces

**MHR-26-VUAL**

**Latch Options**

Header with Short Ejector/Latch for Sockets without Strain Reliefs

Header with Long Ejector/Latch for Sockets with Strain Reliefs

**MHR RIGHT ANGLE PCB MOUNT**

A = .100 [2.54] x No. of Spaces + .860 [21.84]  
 B = .100 [2.54] x No. of Spaces + .460 [11.68]  
 C = .100 [2.54] x No. of Spaces

**MHR-26-HUAL**

**Recommended PCB Layout**