

**MMBA SERIES**

**◆ FEATURES**

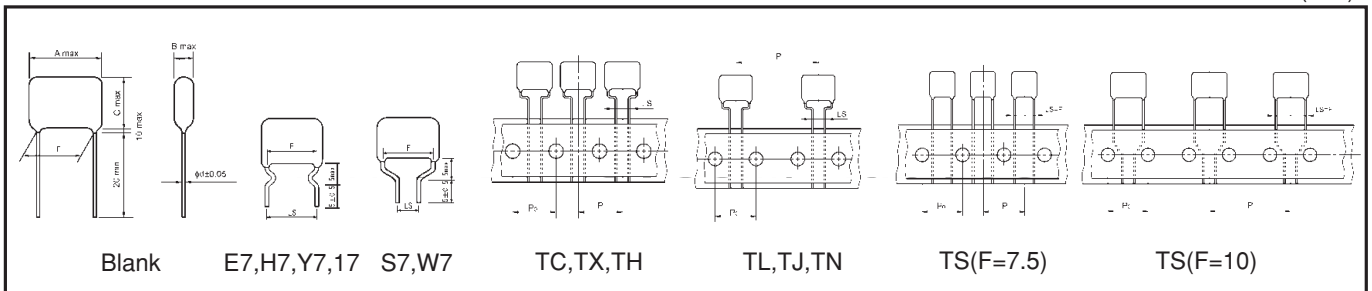
- Small and light.
- Reliability is excellent because these capacitors provide self-healing.
- Coated with flame-retardant (UL94 V-0) epoxy resin.
- RoHS compliance.



**◆ SPECIFICATIONS**

Category temperature	-40 ~ +85°C
Rated voltage (U <sub>R</sub> )	125VAC, 250VAC
Capacitance tolerance	± 10%(K)
tanδ	0.01max at 1kHz
Voltage proof	U <sub>R</sub> ×230% 60s
Insulation resistance	9000MΩ min
Reference standard	JIS C 5101-1

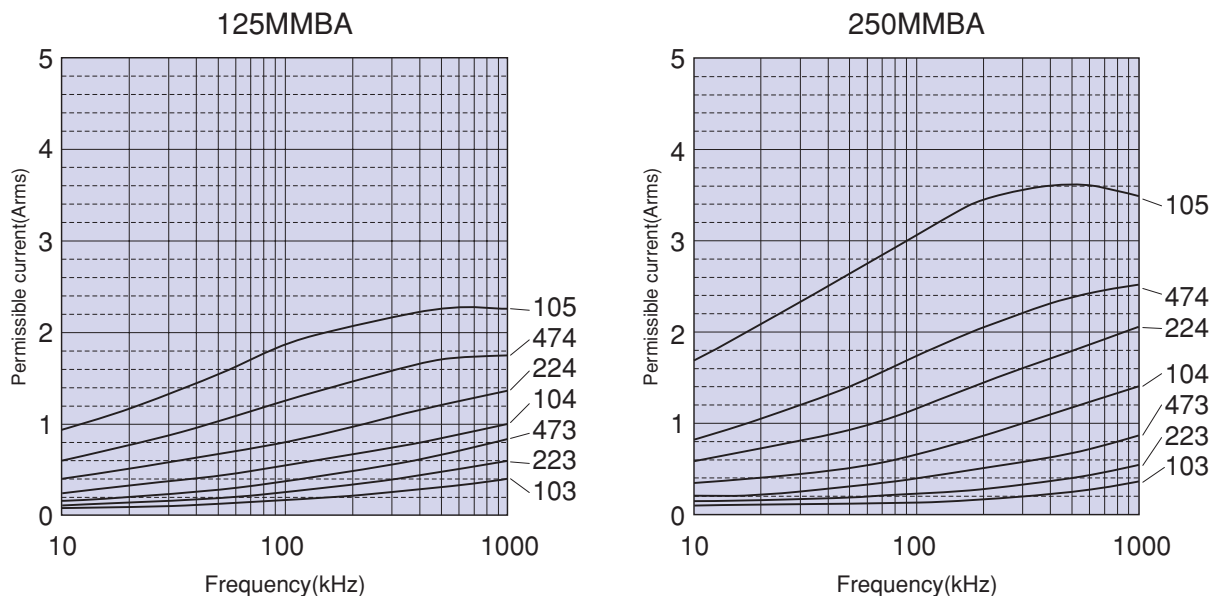
**◆ OUTLINE**



**◆ PART NUMBER**



**◆ PERMISSIBLE CURRENT FOR FREQUENCY**



**◆ STANDARD SIZE**

□ : Tolerance    \*\* : Suffix

RATED VOLTAGE	cap(μF)	Dimensions (mm)						Typical Packaging Quantity (pcs)							Part No.
								Long Lead type		Taping Ammo pack type - style					
		A	B	C	F±1.0	LS±0.5	d	Bag	Carton	TC	TX, TH	TL, TJ	TN	TS	
125 VAC	0.01	10.0	5.5	9.5	7.5	5.0/7.5	0.6	200	6,000	1,000	-	-	-	1,000	125MMBA103□**
	0.012	10.0	5.5	9.5	7.5	5.0/7.5	0.6	200	6,000	1,000	-	-	-	1,000	125MMBA123□**
	0.015	10.0	5.5	9.5	7.5	5.0/7.5	0.6	200	6,000	1,000	-	-	-	1,000	125MMBA153□**
	0.018	10.0	5.5	9.5	7.5	5.0/7.5	0.6	200	6,000	1,000	-	-	-	1,000	125MMBA183□**
	0.022	10.0	5.5	9.5	7.5	5.0/7.5	0.6	200	6,000	1,000	-	-	-	1,000	125MMBA223□**
	0.027	10.0	5.5	9.5	7.5	5.0/7.5	0.6	200	6,000	1,000	-	-	-	1,000	125MMBA273□**
	0.033	10.0	5.5	9.5	7.5	5.0/7.5	0.6	200	6,000	1,000	-	-	-	1,000	125MMBA333□**
	0.039	10.0	5.5	10.0	7.5	5.0/7.5	0.6	200	5,000	1,000	-	-	-	1,000	125MMBA393□**
	0.047	10.0	6.0	10.5	7.5	5.0/7.5	0.6	200	5,000	1,000	-	-	-	1,000	125MMBA473□**
	0.056	10.0	6.0	11.0	7.5	5.0/7.5	0.6	200	4,000	1,000	-	-	-	1,000	125MMBA563□**
	0.068	10.0	6.0	12.5	7.5	5.0/7.5	0.6	200	4,000	1,000	-	-	-	1,000	125MMBA683□**
	0.082	10.0	6.5	13.0	7.5	5.0/7.5	0.6	200	4,000	1,000	-	-	-	1,000	125MMBA823□**
	0.1	10.0	6.0	9.0	7.5	5.0/7.5	0.5	200	6,000	1,000	-	-	-	1,000	125MMBA104□**
	0.12	10.0	6.0	9.0	7.5	5.0/7.5	0.5	200	6,000	1,000	-	-	-	1,000	125MMBA124□**
	0.15	10.0	6.5	10.0	7.5	5.0/7.5	0.5	200	5,000	1,000	-	-	-	1,000	125MMBA154□**
	0.18	10.0	6.5	11.0	7.5	5.0/7.5	0.5	200	6,000	1,000	-	-	-	1,000	125MMBA184□**
	0.22	10.0	6.5	11.5	7.5	5.0/7.5	0.5	200	4,000	1,000	-	-	-	1,000	125MMBA224□**
	0.27	12.5	6.0	11.5	10.0	5.0/7.5/10.0	0.6	200	4,000	-	1,000	500	-	500	125MMBA274□**
0.33	12.5	6.5	12.0	10.0	5.0/7.5/10.0	0.6	200	3,000	-	1,000	500	-	500	125MMBA334□**	
0.39	12.5	7.0	12.5	10.0	5.0/7.5/10.0	0.6	200	3,000	-	500	500	-	500	125MMBA394□**	
0.47	12.5	7.5	13.5	10.0	5.0/7.5/10.0	0.6	100	2,000	-	500	500	-	500	125MMBA474□**	
0.56	12.5	7.5	15.0	10.0	5.0/7.5/10.0	0.6	100	2,000	-	500	400	-	400	125MMBA564□**	
0.68	12.5	8.0	15.5	10.0	5.0/7.5/10.0	0.6	100	2,000	-	500	400	-	400	125MMBA684□**	
0.82	17.5	7.5	14.0	15.0	5.0/7.5/15.0	0.6	100	2,000	-	-	400	400	-	125MMBA824□**	
1	17.5	8.0	15.0	15.0	5.0/7.5/15.0	0.6	100	1,500	-	-	400	400	-	125MMBA105□**	
250 VAC	0.01	12.5	5.0	9.0	10.0	5.0/7.5/10.0	0.6	200	5,000	-	1,000	500	-	500	250MMBA103□**
	0.012	12.5	5.5	9.5	10.0	5.0/7.5/10.0	0.6	200	5,000	-	1,000	500	-	500	250MMBA123□**
	0.015	12.5	6.0	10.0	10.0	5.0/7.5/10.0	0.6	200	4,000	-	1,000	500	-	500	250MMBA153□**
	0.018	12.5	6.0	10.0	10.0	5.0/7.5/10.0	0.6	200	4,000	-	1,000	500	-	500	250MMBA183□**
	0.022	12.5	5.5	9.5	10.0	5.0/7.5/10.0	0.6	200	4,000	-	1,000	500	-	500	250MMBA223□**
	0.027	12.5	5.5	11.0	10.0	5.0/7.5/10.0	0.6	200	4,000	-	1,000	500	-	500	250MMBA273□**
	0.033	12.5	5.5	11.0	10.0	5.0/7.5/10.0	0.6	200	4,000	-	1,000	500	-	500	250MMBA333□**
	0.039	12.5	6.0	11.5	10.0	5.0/7.5/10.0	0.6	200	4,000	-	1,000	500	-	500	250MMBA393□**
	0.047	12.5	6.5	12.0	10.0	5.0/7.5/10.0	0.6	200	3,000	-	1,000	500	-	500	250MMBA473□**
	0.056	18.0	5.5	11.0	15.0	5.0/7.5/15.0	0.6	200	3,000	-	-	500	400	-	250MMBA563□**
	0.068	18.0	6.0	11.0	15.0	5.0/7.5/15.0	0.6	100	3,000	-	-	500	400	-	250MMBA683□**
	0.082	18.0	6.0	11.5	15.0	5.0/7.5/15.0	0.6	100	3,000	-	-	500	400	-	250MMBA823□**
	0.1	18.0	6.0	13.0	15.0	5.0/7.5/15.0	0.6	100	2,000	-	-	500	400	-	250MMBA104□**
	0.12	18.0	7.0	13.5	15.0	5.0/7.5/15.0	0.8	100	2,000	-	-	500	400	-	250MMBA124□**
	0.15	18.0	7.5	14.5	15.0	5.0/7.5/15.0	0.8	100	1,500	-	-	400	400	-	250MMBA154□**
	0.18	18.0	8.0	15.0	15.0	5.0/7.5/15.0	0.8	100	1,500	-	-	400	400	-	250MMBA184□**
	0.22	18.0	9.0	15.5	15.0	5.0/7.5/15.0	0.8	100	1,500	-	-	400	300	-	250MMBA224□**
	0.27	25.5	7.0	16.0	22.5	22.5	0.8	50	1,500	-	-	-	-	-	250MMBA274□**
0.33	25.5	8.0	16.5	22.5	22.5	0.8	200	1,000	-	-	-	-	-	250MMBA334□**	
0.39	25.5	8.5	17.0	22.5	22.5	0.8	200	1,000	-	-	-	-	-	250MMBA394□**	
0.47	25.5	9.0	18.0	22.5	22.5	0.8	200	800	-	-	-	-	-	250MMBA474□**	
0.56	25.5	9.0	20.0	22.5	22.5	0.8	200	800	-	-	-	-	-	250MMBA564□**	
0.68	25.5	10.5	21.0	22.5	22.5	0.8	100	500	-	-	-	-	-	250MMBA684□**	
0.82	31.0	10.0	20.5	27.5	-	0.8	100	500	-	-	-	-	-	250MMBA824□**	
1	31.0	11.0	22.0	27.5	-	0.8	100	500	-	-	-	-	-	250MMBA105□**	

- Note) 1. Operating circuit (Fig.1, Fig.2)  
 2. When operating capacitor for noise suppression, voltage of pulse applied to the capacitor shall be within value specified in Table 1.

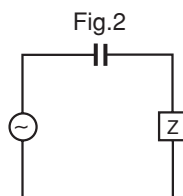
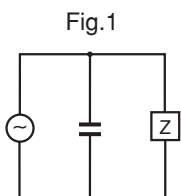


Table 1

Rated Voltage	Pulse Voltage
125VAC	250Vo-p
250VAC	630Vo-p