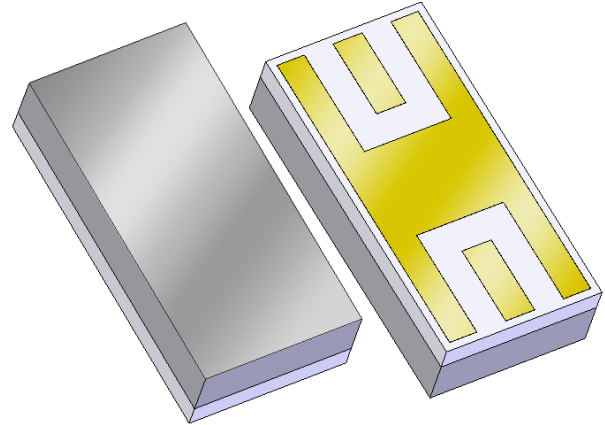


Features

- For GPS applications
- Usable bandwidth of 30 MHz
- Single-ended operation
- Ceramic Surface Mount Package
- This part number is a replacement for part number CRF-1227-4
- Hermetic

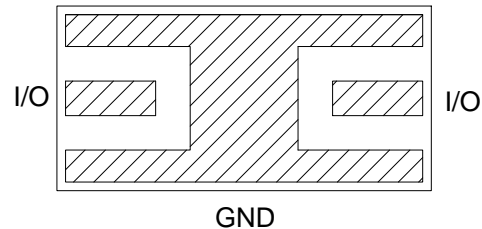
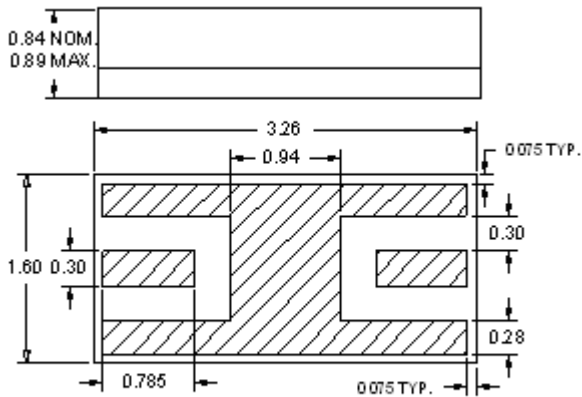


Package

Surface Mount 3.26 x 1.60 x 0.84 mm

Pin Configuration

Bottom View



Pin No.	Description
I/O	Input/Output
GND	Ground

Dimensions shown are nominal in millimeters
All tolerances are $\pm 0.13\text{mm}$ except overall length and width $\pm 0.25\text{mm}$

Overall width, length, and thickness are the only critical dimensions. All other dimensions are for reference only.

Body: *Sapphire*

Lid: *Alumina*

Terminations: *Au* plating 0.5 - 2.5 μm ,
over a 2.0 - 6.0 μm *Ni* plating

Electrical Specifications ⁽¹⁾

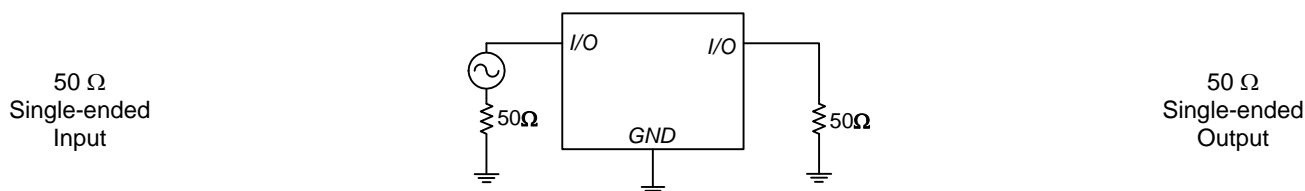
Operating Temperature Range: ⁽²⁾ -40 to +85 °C

Parameter ⁽³⁾	Minimum	Typical	Maximum	Unit
10dB Center Frequency	1222	1227	1232	MHz
Insertion Loss at Fo	-	2.75	4.0	dB
3 dB Bandwidth ⁽⁴⁾	30	40	-	MHz
40 dB Bandwidth ⁽⁴⁾	-	125	140	MHz
Amplitude Variation ⁽⁴⁾ 1212 - 1242 MHz	-	1.2	2	dB
Input/Output VSWR at Fo	-	1.5	2:1	-
Source Impedance	-	50	-	Ω
Load Impedance	-	50	-	Ω

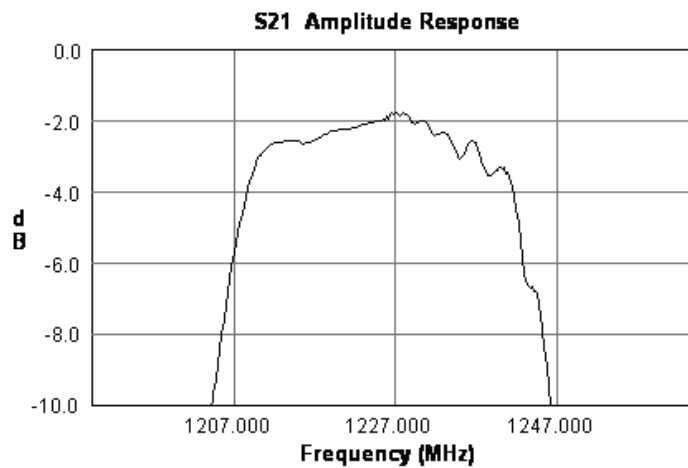
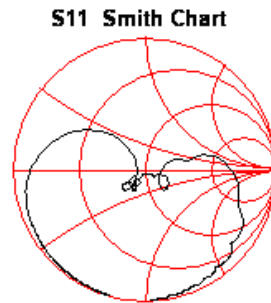
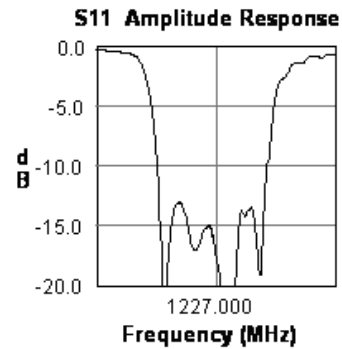
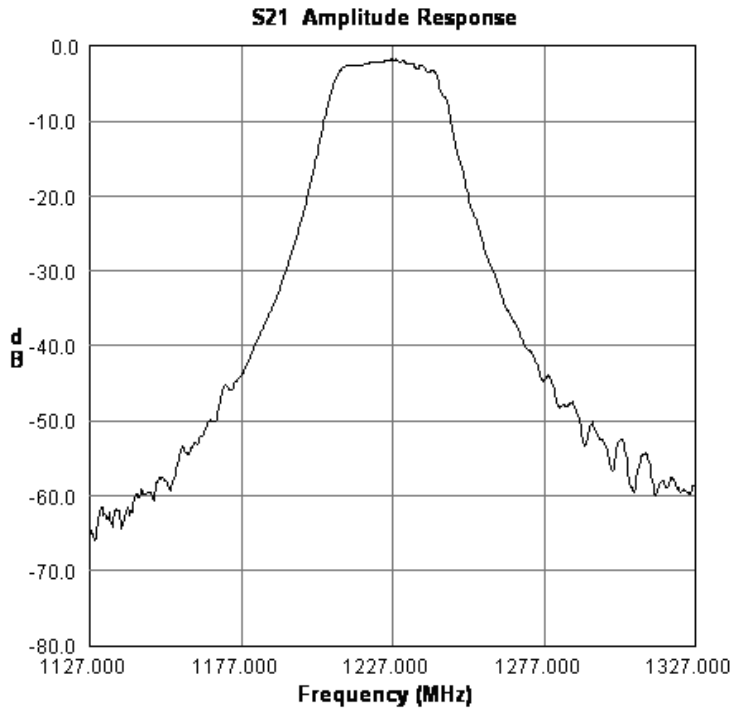
Notes:

1. All specifications are based on the test circuit shown below
2. In production, devices will be tested at room temperature to a guardbanded specification to ensure electrical compliance over temperature
3. Electrical margin has been built into the design to account for the variations due to temperature drift and manufacturing tolerances
4. Referenced to the insertion loss at center frequency

Test Circuit:

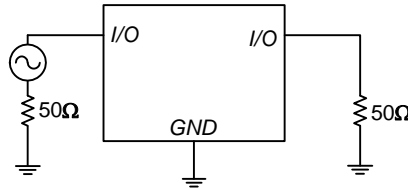


Typical Performance (at +25°C)



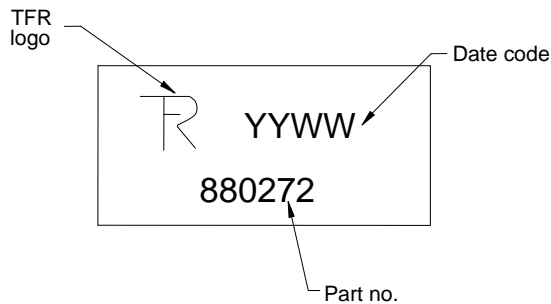
Matching Schematics

50 Ω
Single-ended
Input



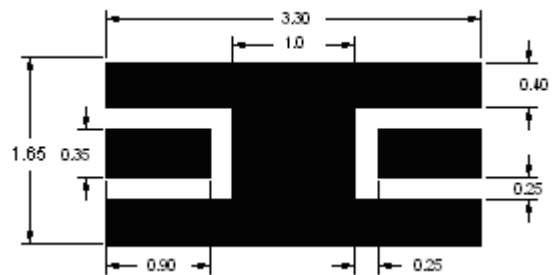
50 Ω
Single-ended
Output

Marking



The date code consists of: YY = last digit of year,
WW = 2 digit week

PCB Footprint



This footprint represents a recommendation only
Dimensions shown are nominal in millimeters


Tape and Reel

Available on Request

Maximum Ratings

Parameter	Symbol	Minimum	Maximum	Unit
Operating Temperature Range	T	-40	+85	°C
Storage Temperature Range	T _{stg}	-55	+100	°C

Warnings

- Electrostatic Sensitive Device (ESD) 
- Avoid ultrasonic exposure



Triquint's liability is limited only to the Bulk Acoustic Wave (BAW) component(s) described in this data sheet. Triquint does not accept any liability for applications, processes, circuits or assemblies, which are implemented using any Triquint component described in this data sheet.

Contact Information

TriQuint 
SEMICONDUCTOR
63140 Britta St. Bldg. C
Bend, OR 97701

Phone: +1 (972) 994-8465
Fax: +1 (972) 994-8504
Email: custservbend@tqs.com
Web: www.triquint.com

Or contact one of our worldwide
Network of [sales offices](#),
[Representatives or distributors](#)