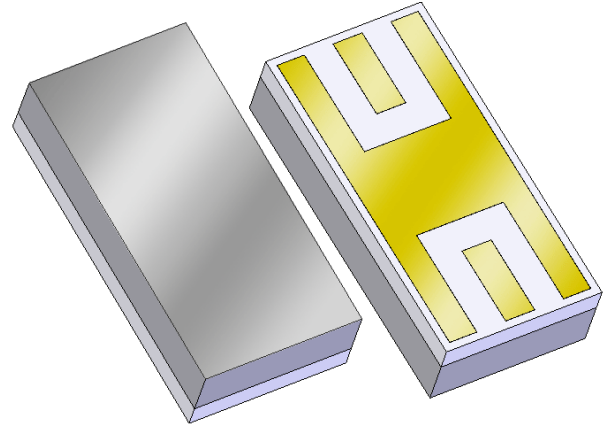


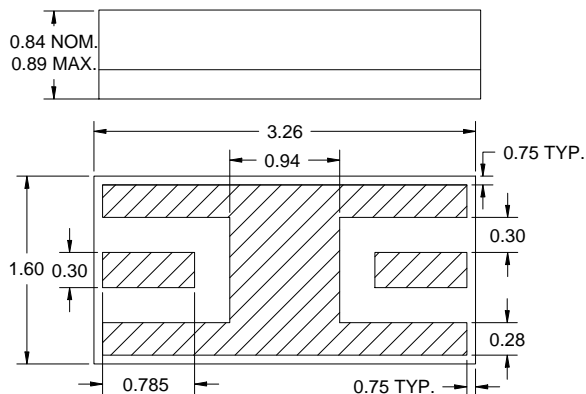
Features

- For 802.11a applications
- Usable bandwidth of 100 MHz
- Single-ended operation
- Ceramic Surface Mount Package
- Hermetic



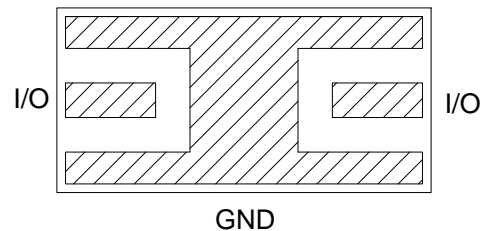
Package

Surface Mount 3.26 x 1.60 x 0.84 mm



Pin Configuration

Bottom View



Pin No.	Description
I/O	Input/Output
GND	Ground

Dimensions shown are nominal in millimeters
All tolerances are ± 0.13 mm except overall
length and width ± 0.25 mm

Overall width, length, and thickness are the only critical
dimensions. All other dimensions are for reference only.

Body: *Sapphire*

Lid: *Alumina*

Terminations: *Au* plating 0.5 - 2.5 μ m,
over a 2.0 - 6.0 μ m *Ni* plating

Electrical Specifications ⁽¹⁾

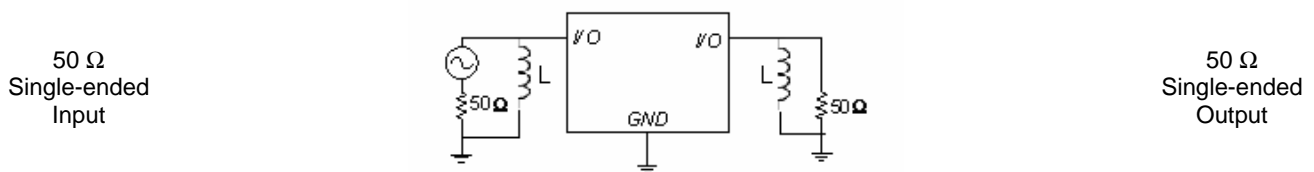
Operating Temperature Range: ⁽²⁾ -40 to +85 °C

Parameter ⁽³⁾	Minimum	Typical	Maximum	Unit
10dB Center Frequency	5765	5775	5785	MHz
Insertion Loss at Fo	-	3	4.5	dB
3 dB Bandwidth ⁽⁴⁾	100	145	-	MHz
20 dB Bandwidth	-	200	300	MHz
Input/Output VSWR (5775 +/- 50 MHz)	-	1.5	2:1	-
Source Impedance	-	50	-	Ω
Load Impedance	-	50	-	Ω

Notes:

1. All specifications are based on the test circuit shown below
2. In production, devices will be tested at room temperature to a guardbanded specification to ensure electrical compliance over temperature
3. Electrical margin has been built into the design to account for the variations due to temperature drift and manufacturing tolerances
4. Referenced to the insertion loss at center frequency

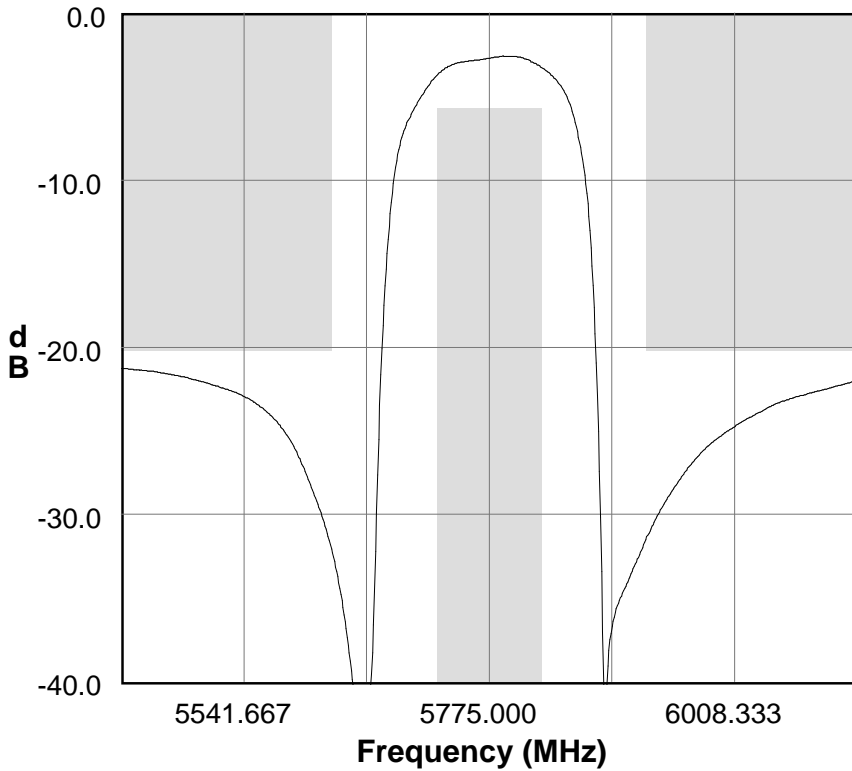
Test Circuit:



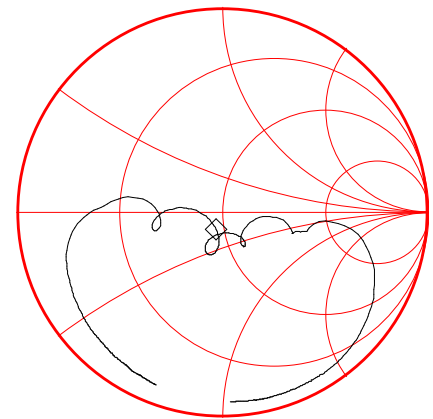
L = 3nH Q=40. This value may change due to parasitic variation of customer's board.

Typical Performance (at +25°C)

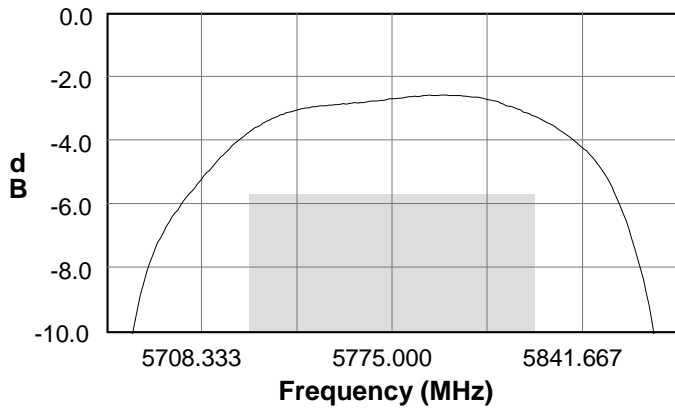
S21 Amplitude Response



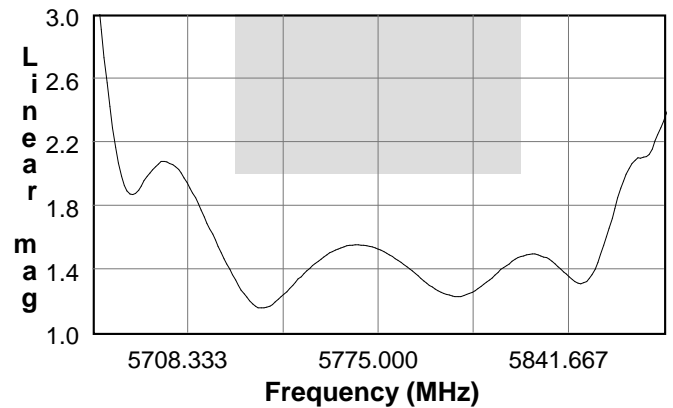
S11 Smith Chart



S21 Amplitude Response

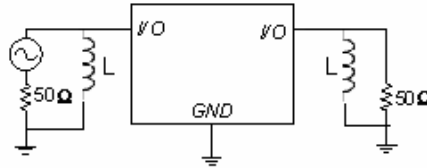


S11 VSWR



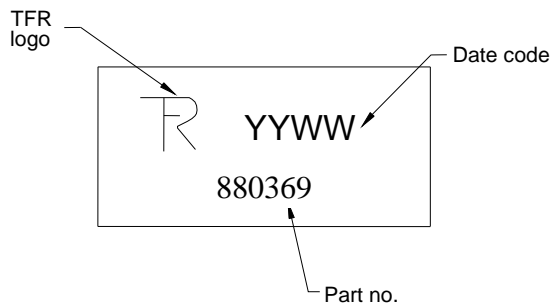
Matching Schematics

50 Ω
Single-ended
Input



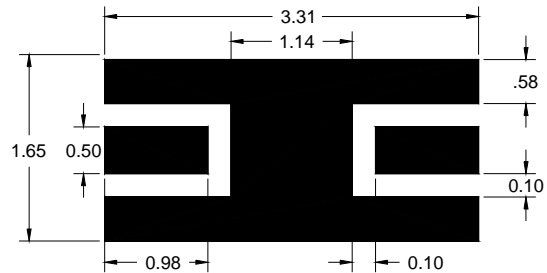
50 Ω
Single-ended
Output

Marking



The date code consists of: YY = last digit of year,
WW = 2 digit week

PCB Footprint



This footprint represents a recommendation only
Dimensions shown are nominal in millimeters

Tape and Reel

Tape and Reel available upon request
EIA-481

Tinning available per J-STD-001

ROHS compliant (no tinning)
DFARS compliant

Maximum Ratings

Parameter	Symbol	Minimum	Maximum	Unit
Operating Temperature Range	T	-40	+85	°C
Storage Temperature Range	T _{stg}	-55	+100	°C

Warnings

- Electrostatic Sensitive Device (ESD)
- Avoid ultrasonic exposure



Triquint's liability is limited only to the Bulk Acoustic Wave (BAW) component(s) described in this data sheet. Triquint does not accept any liability for applications, processes, circuits or assemblies, which are implemented using any Triquint component described in this data sheet.

Contact Information



63140 Britta St. Bldg. C
 Bend, OR 97701

Phone: +1 (972) 994-8465
 Fax: +1 (972) 994-8504
 Email: custservbend@tqs.com
 Web: www.triquint.com

Or contact one of our worldwide
 Network of [sales offices](#),
[Representatives or distributors](#)