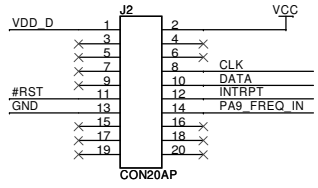
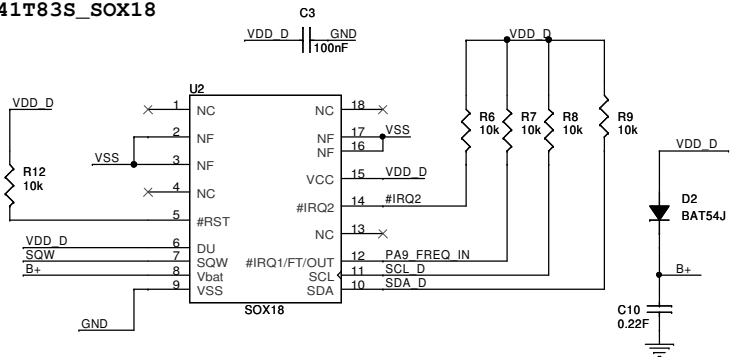


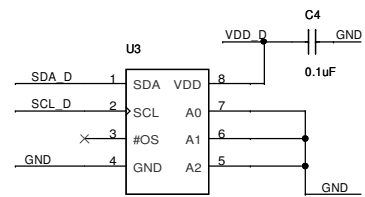
MALE\_CON.



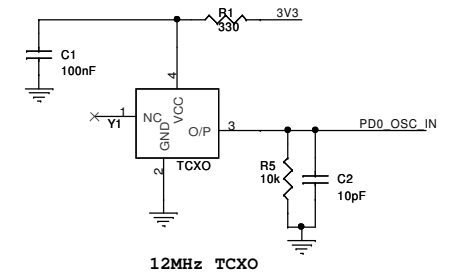
M41T83S\_SOX18



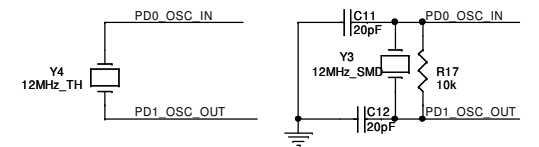
STTS75DS2F\_TSSOP8



12MHz CRYSTAL

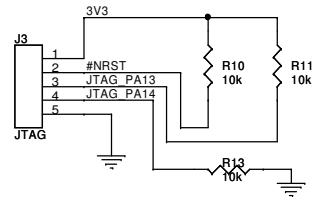


12MHz TCXO

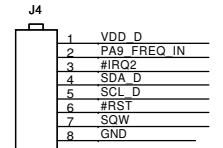


12MHz TH HOLE CRYSTAL 12MHz SMD CRYSTAL

JTAG



STMicroelectronics and/or its licensors do not warrant the accuracy or completeness of this specification or any information contained therein. STMicroelectronics and/or its licensors do not warrant that this design will meet the specifications, will be suitable for your application or fit for any particular purpose, or will operate in an implementation. STMicroelectronics and/or its licensors do not warrant that the design is production worthy. You should completely validate and test your design implementation to confirm the system functionality for your application.



POWER INDICATOR LED

Daughter Card ID : 0x09

M41T83SMY6E\_SOX18

WWW.ST.COM		
Title DAUGHTER CARD ID:- 0X09		
Size	Document Number	Rev
	STEVAL-IFR003V1	1
Date:	Mondav, March 08, 2010	Sheet 1 of 1