

STEVAL-IPP001V2

Schematic diagrams

Figure 1. Top

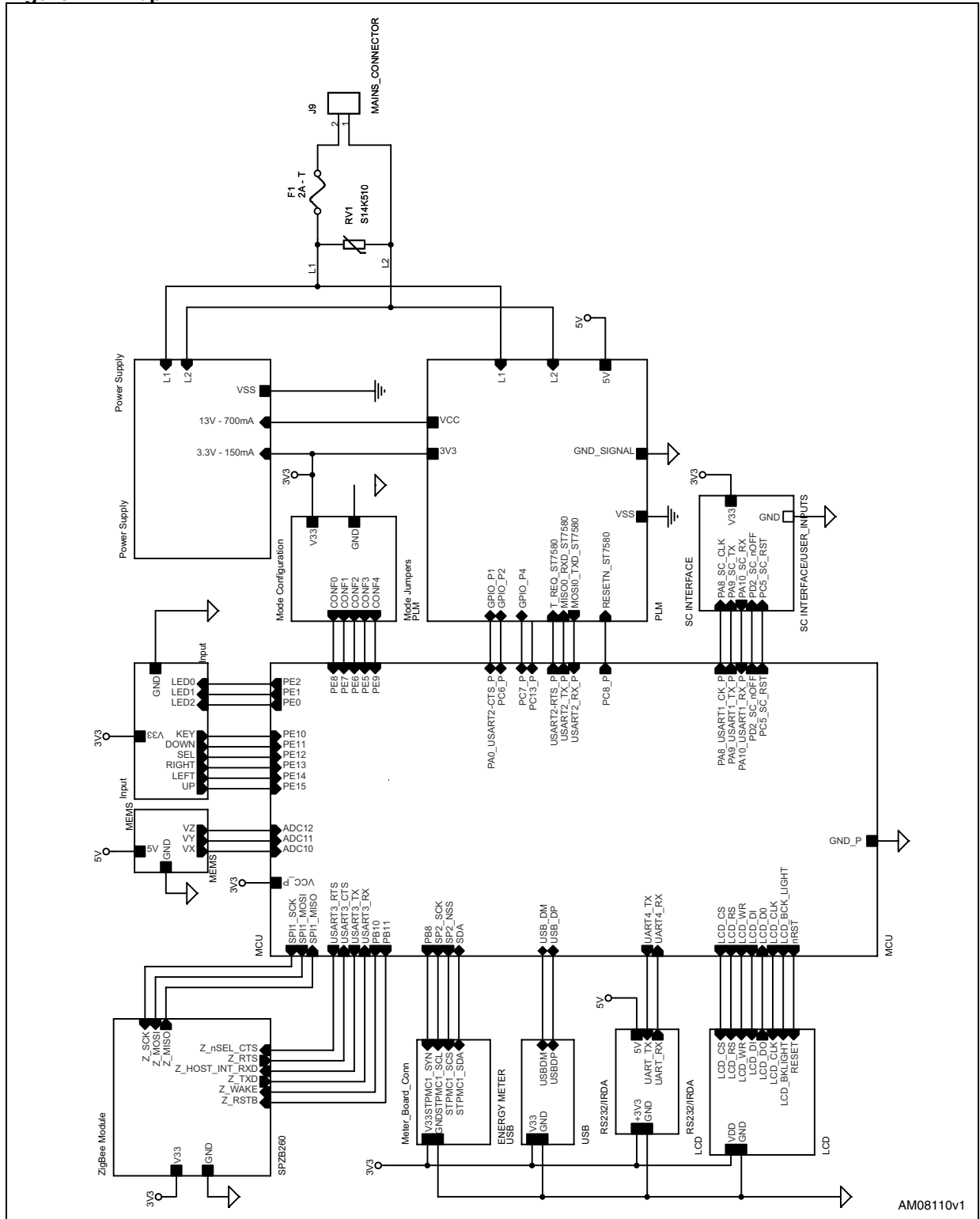
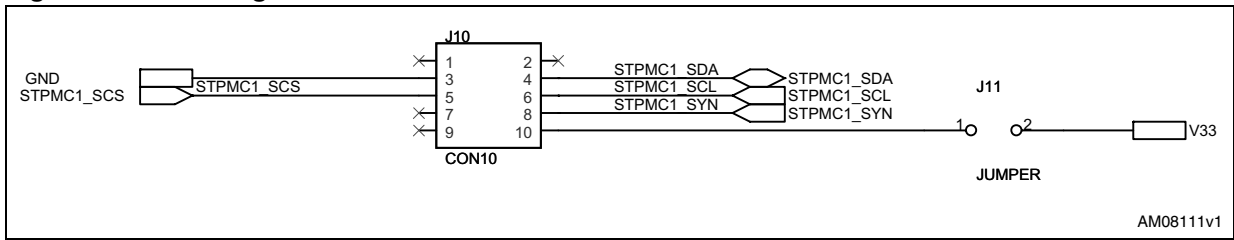
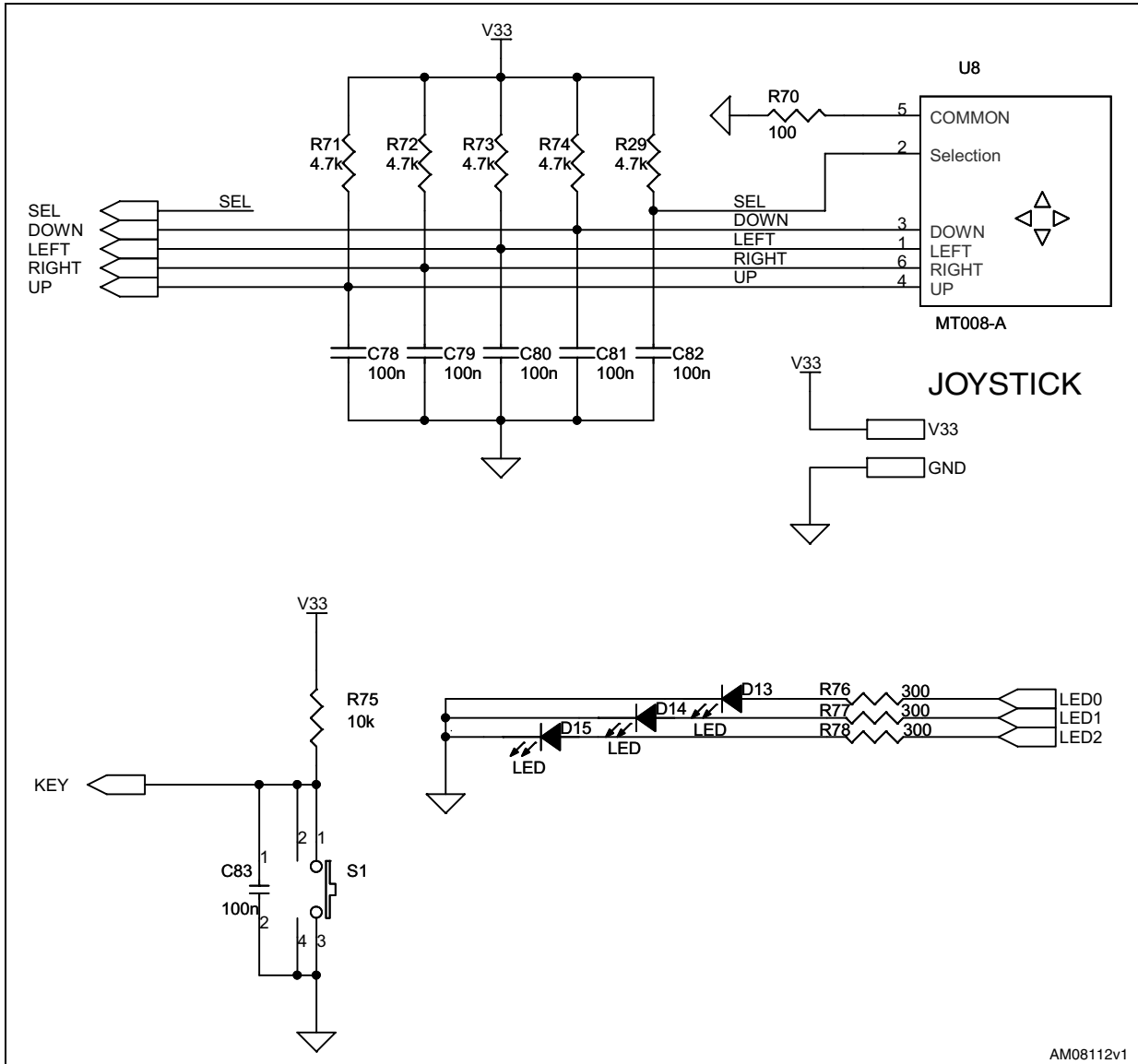


Figure 2. Metering board connector



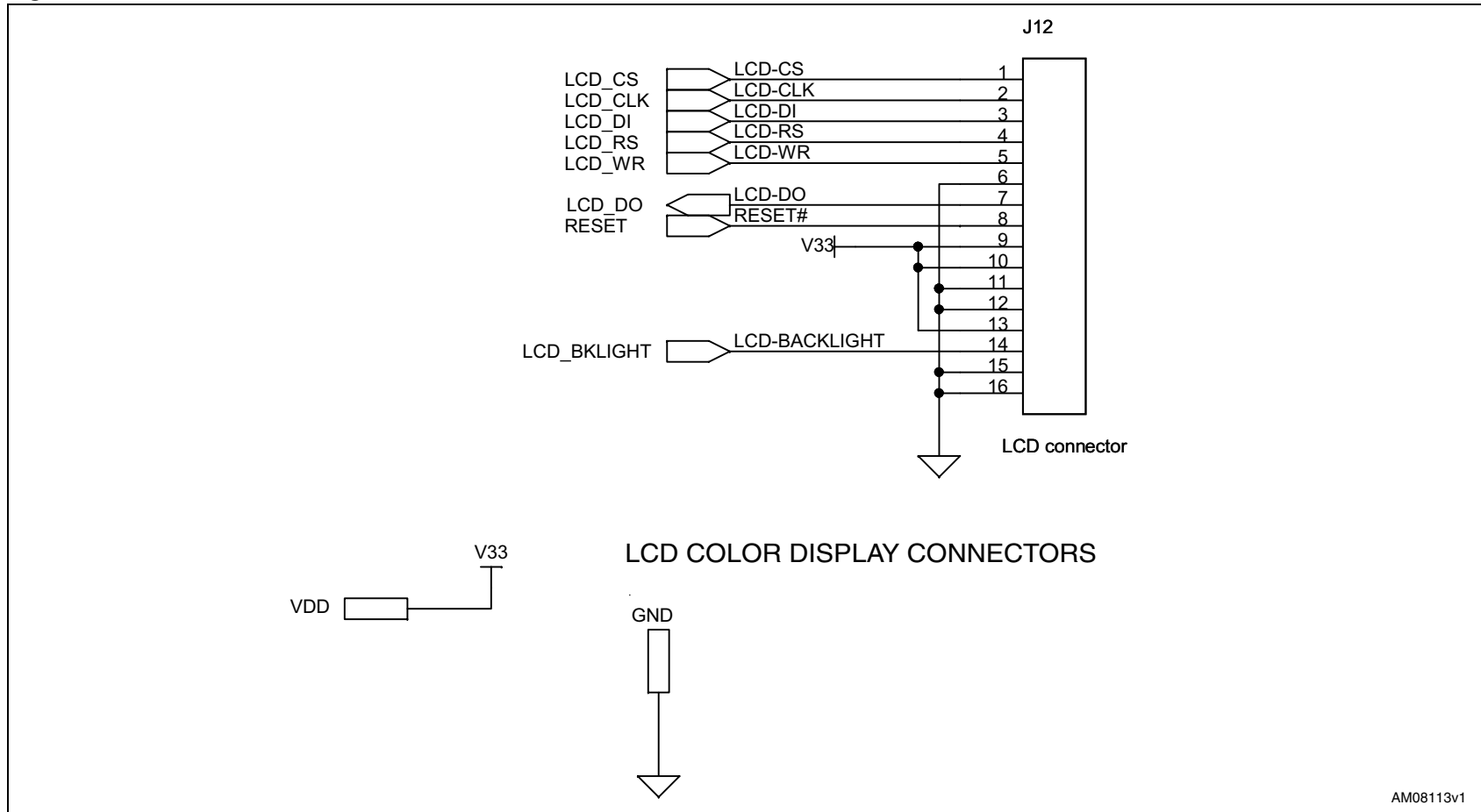
AM08111v1

Figure 3. User interface



AM08112v1

Figure 4. LCD connector section



AM08113v1

Figure 5. MCU schematic

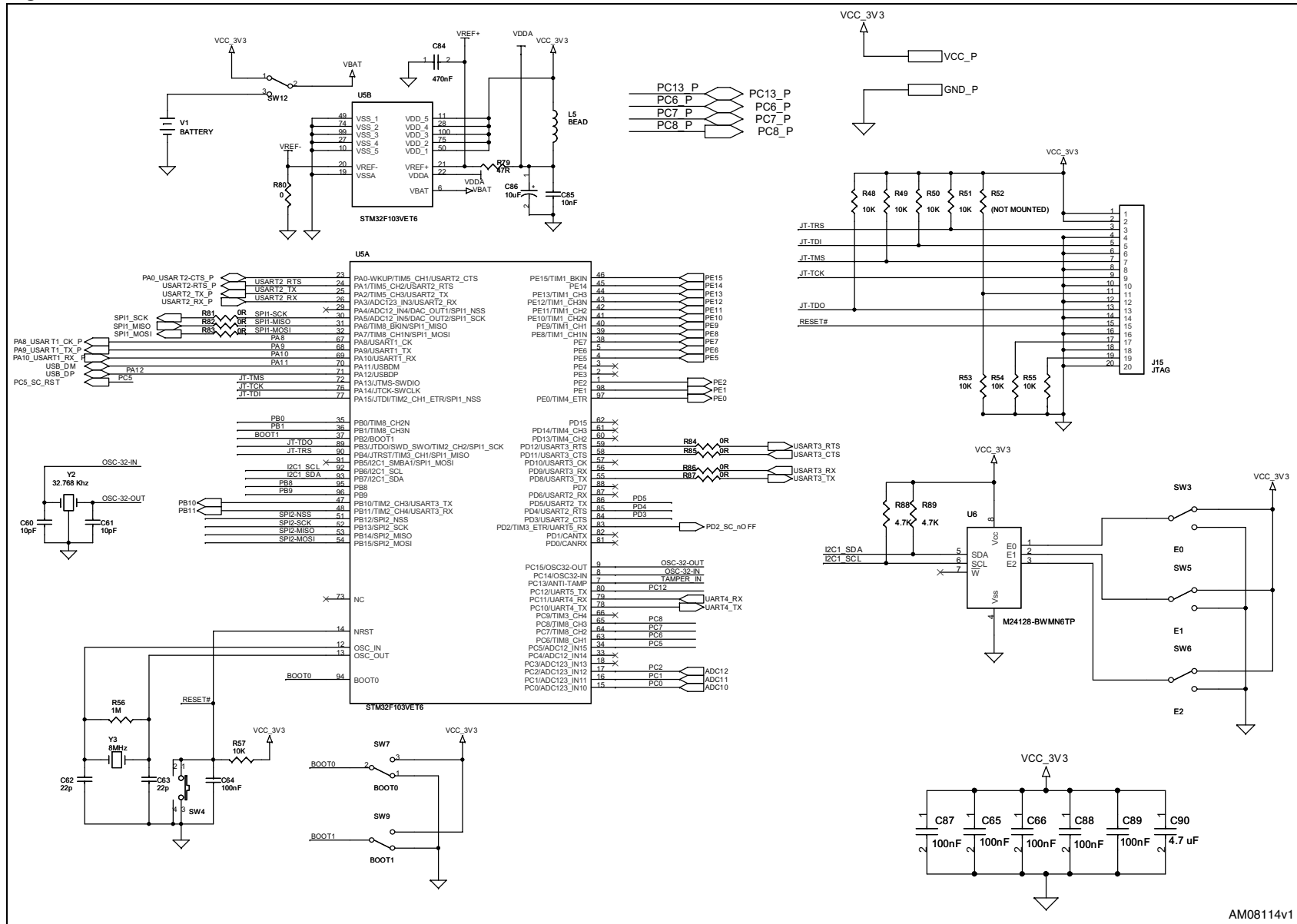
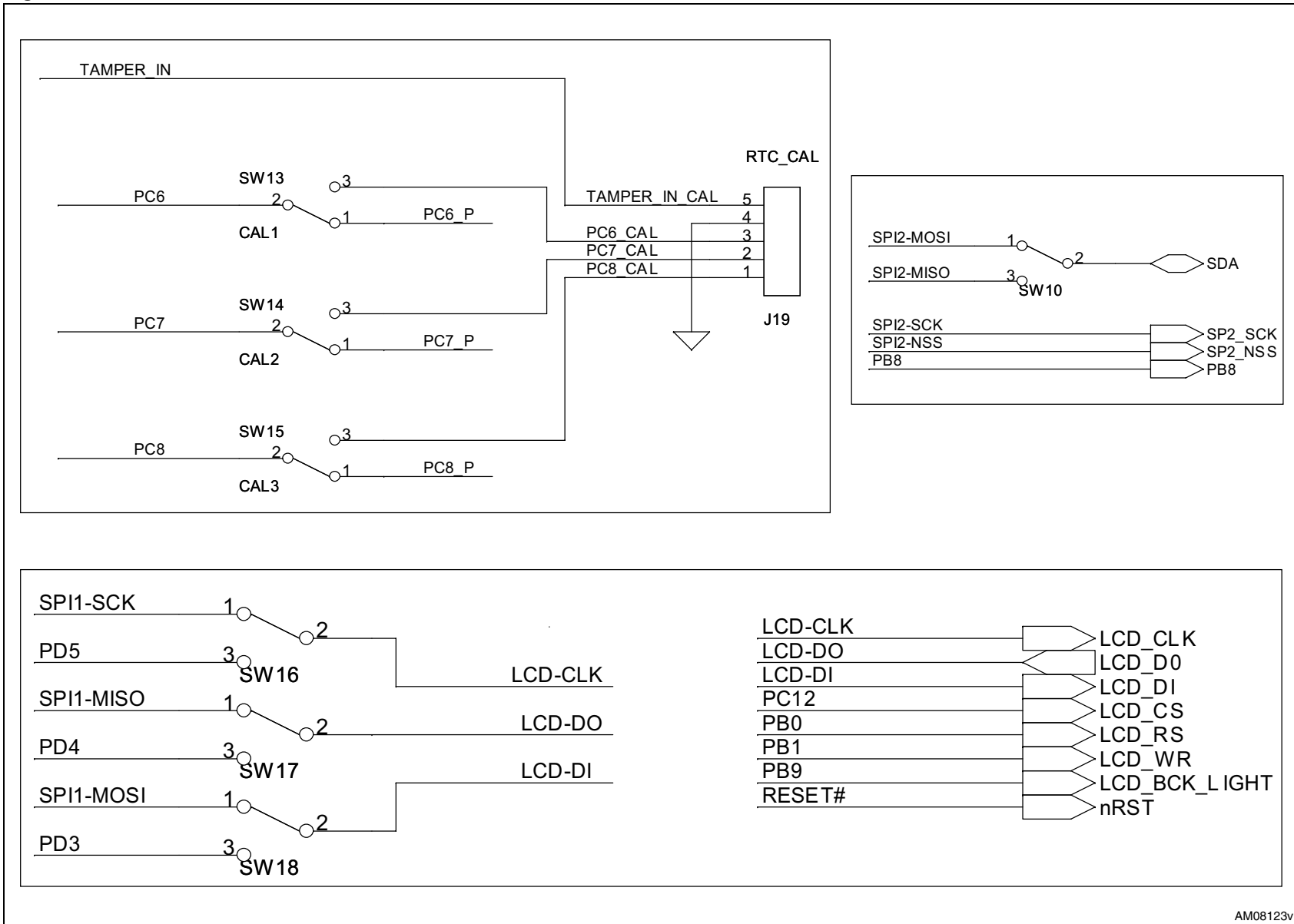


Figure 6. RTC calibration, meter and LCD level



AM08123v

Figure 7. MEMS module connector

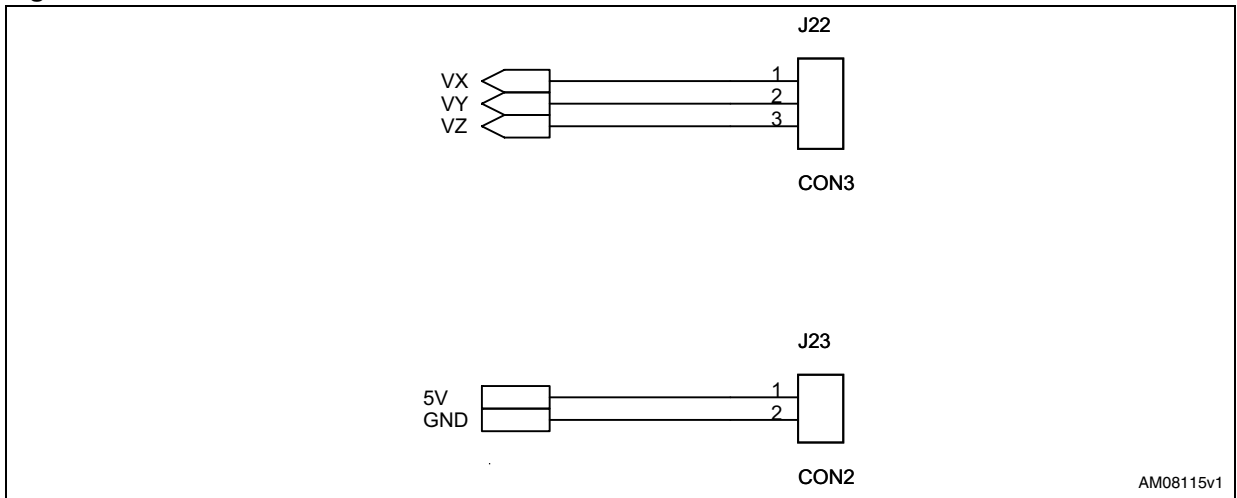


Figure 8. General purpose configuration jumpers

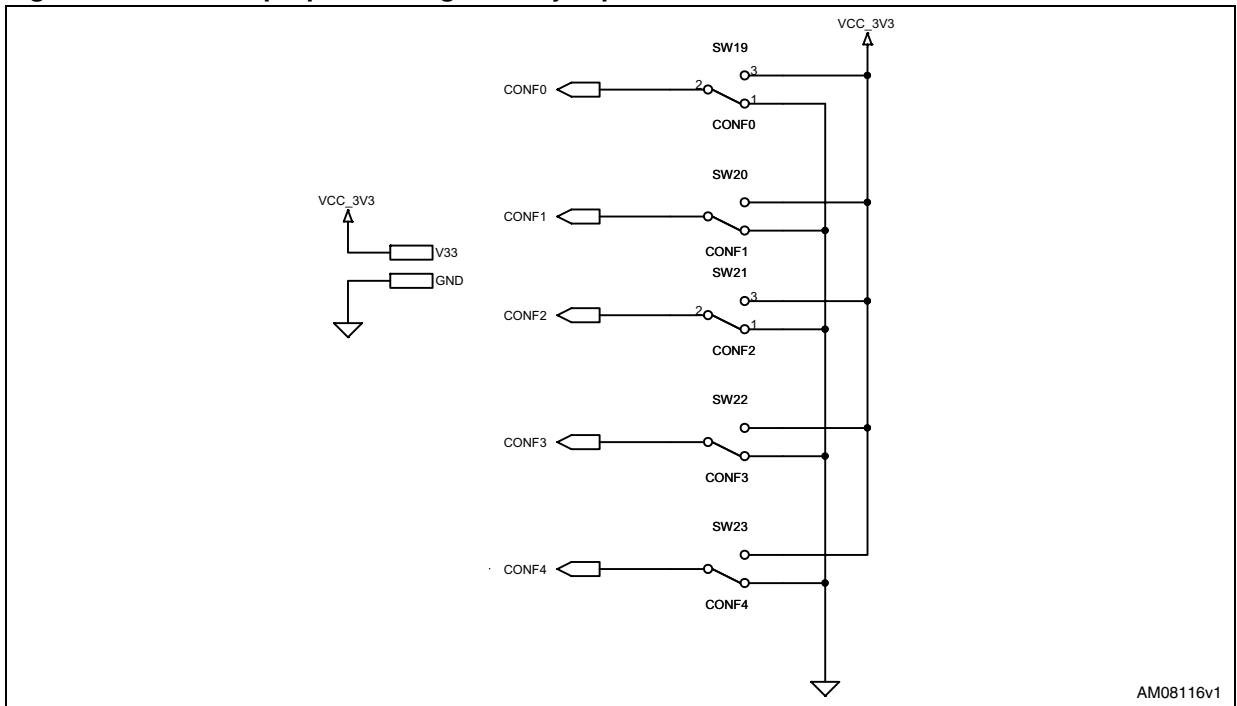
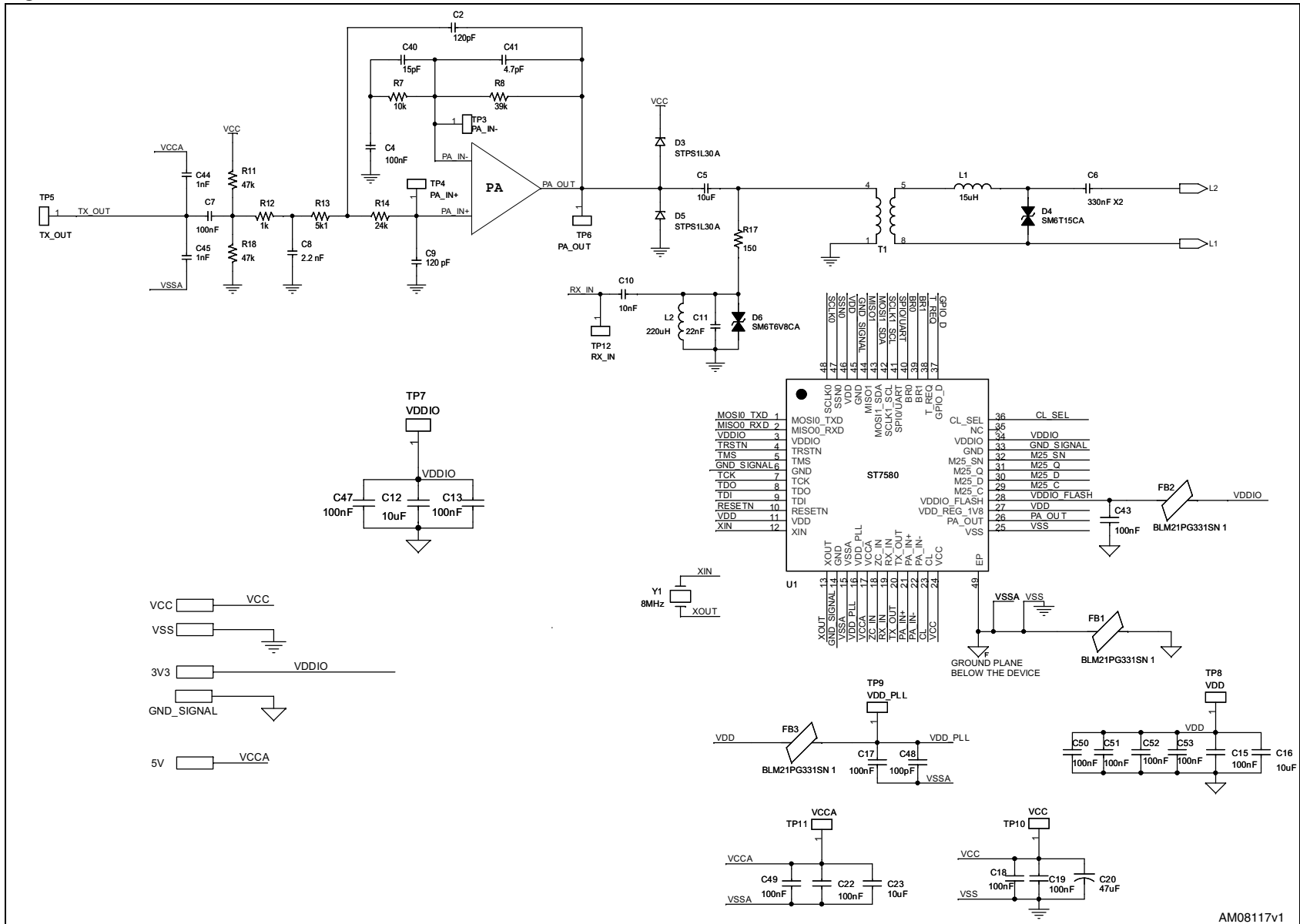
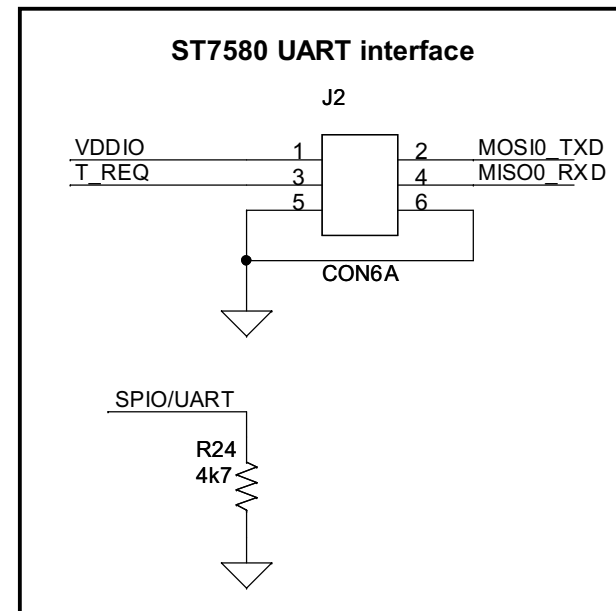
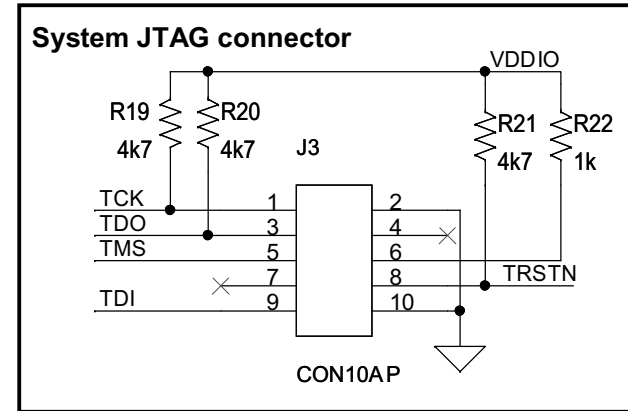
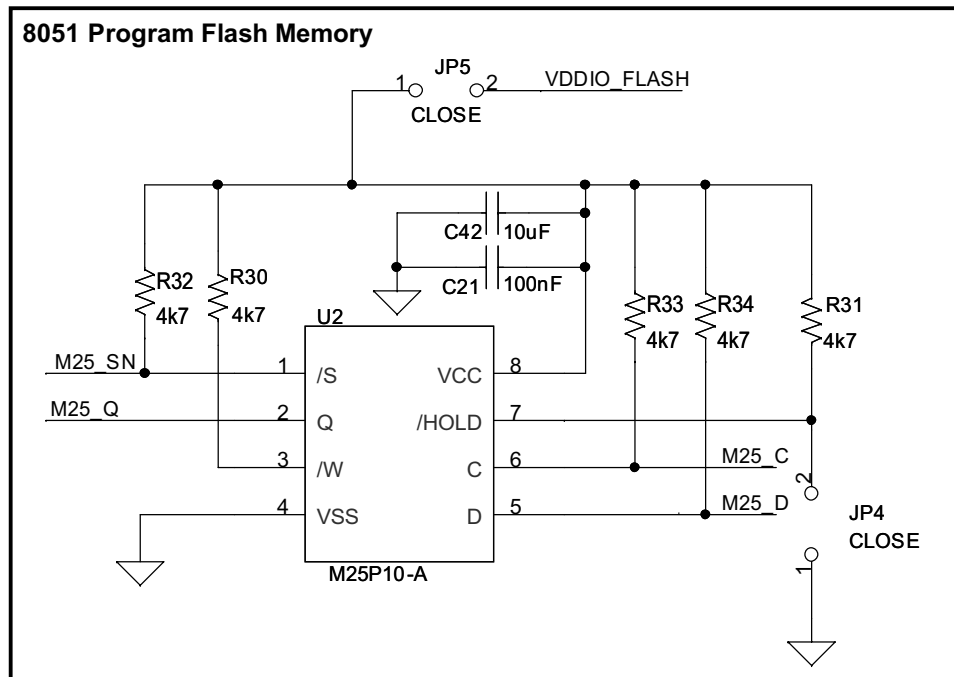


Figure 9. Power line modem



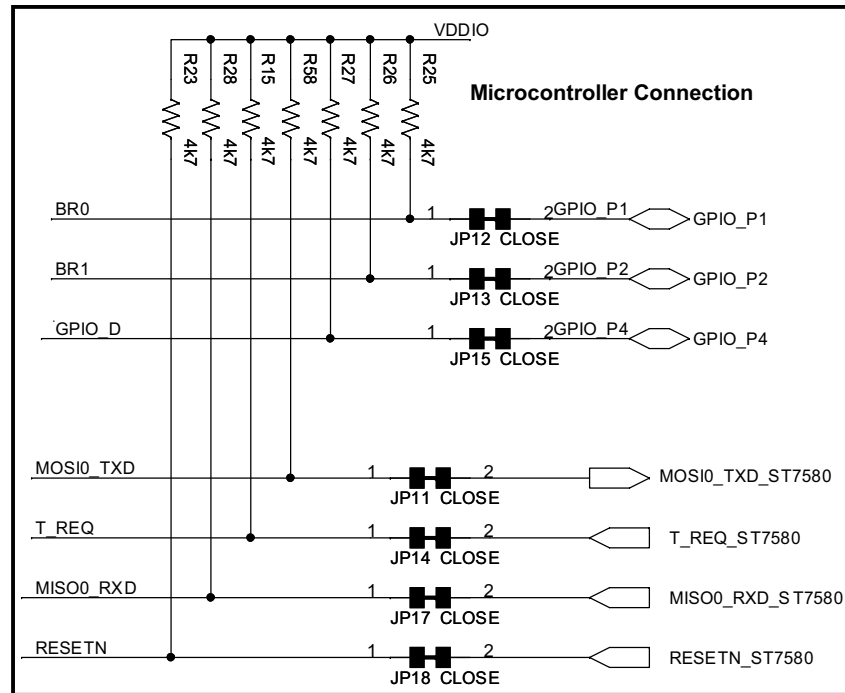
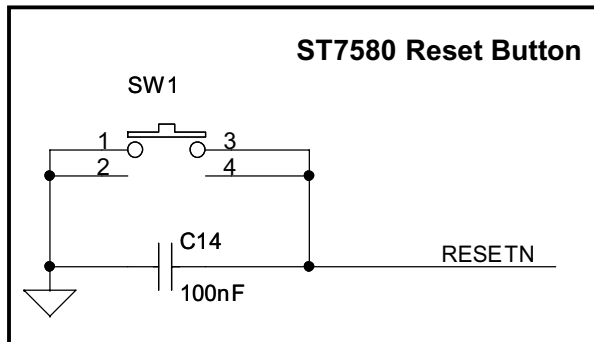
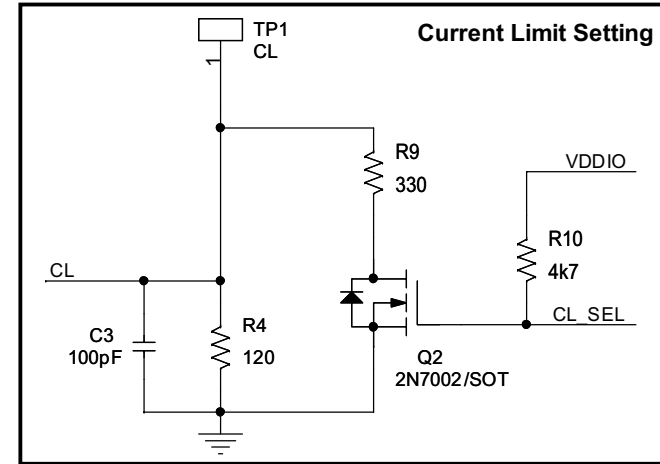
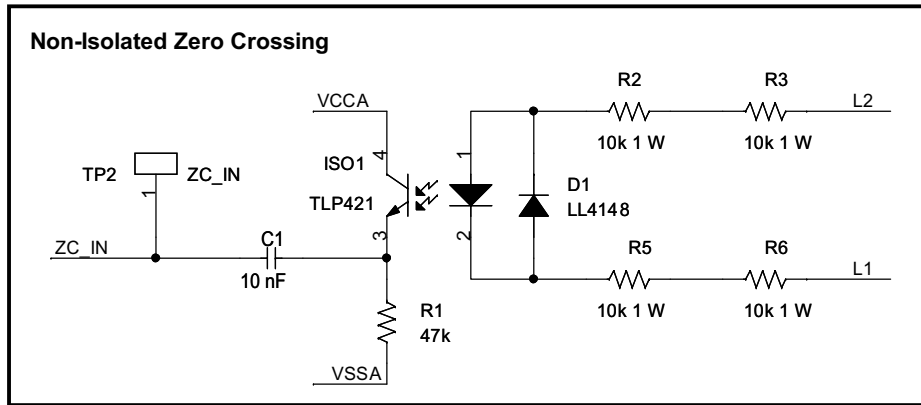
AM08117v1

Figure 10. System JTAG connector, ST7580 UART interface, and 8051 program Flash memory



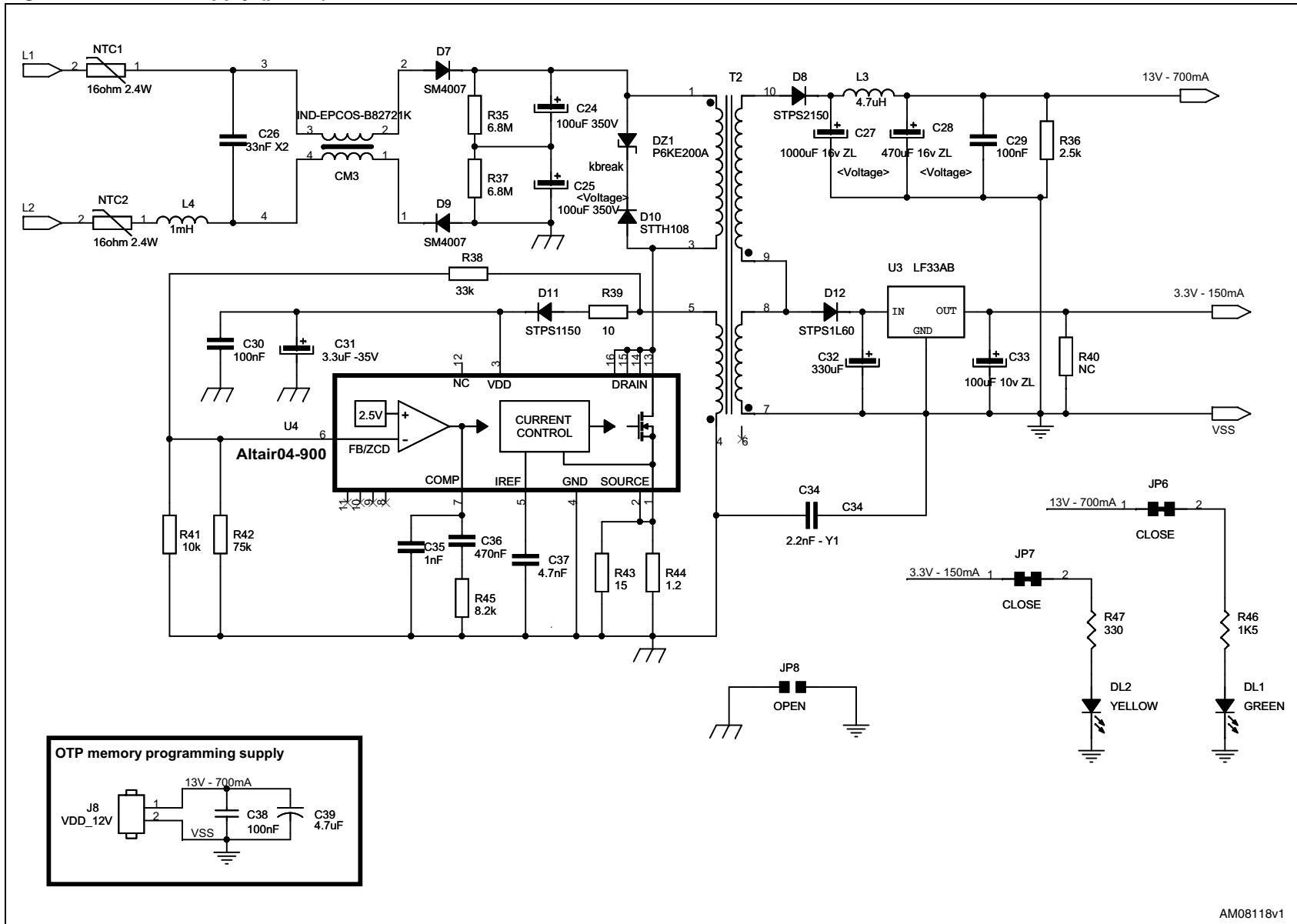
AM08124v1

Figure 11. Non-isolated zero-crossing, ST7580 reset button, current limit setting, and microcontroller connection



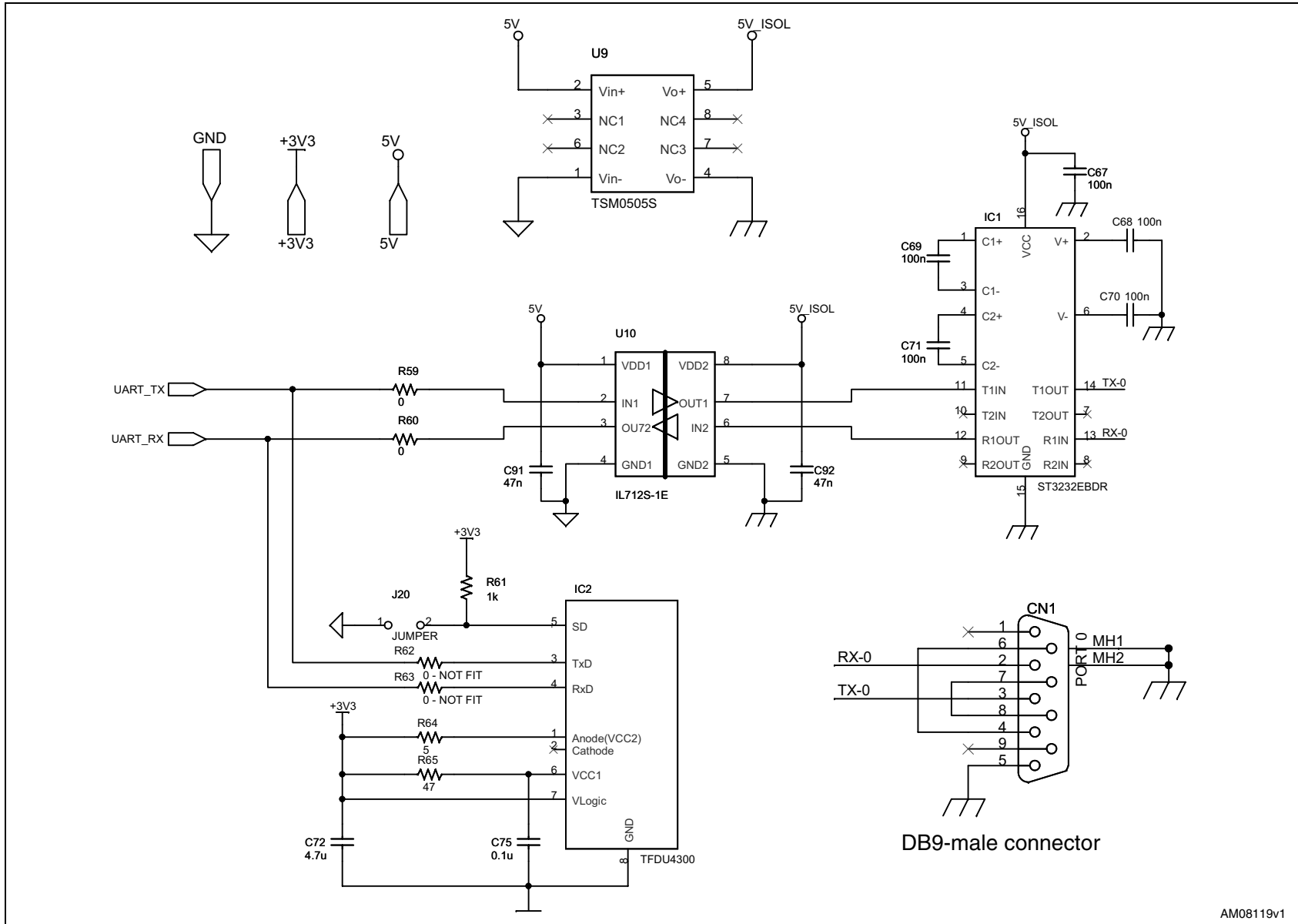
AM08125v1

Figure 12. Power supply (part 1)



AM08118v1

Figure 13. Power supply (part 2)



AM08119v1

Figure 14. Power supply (part 3)

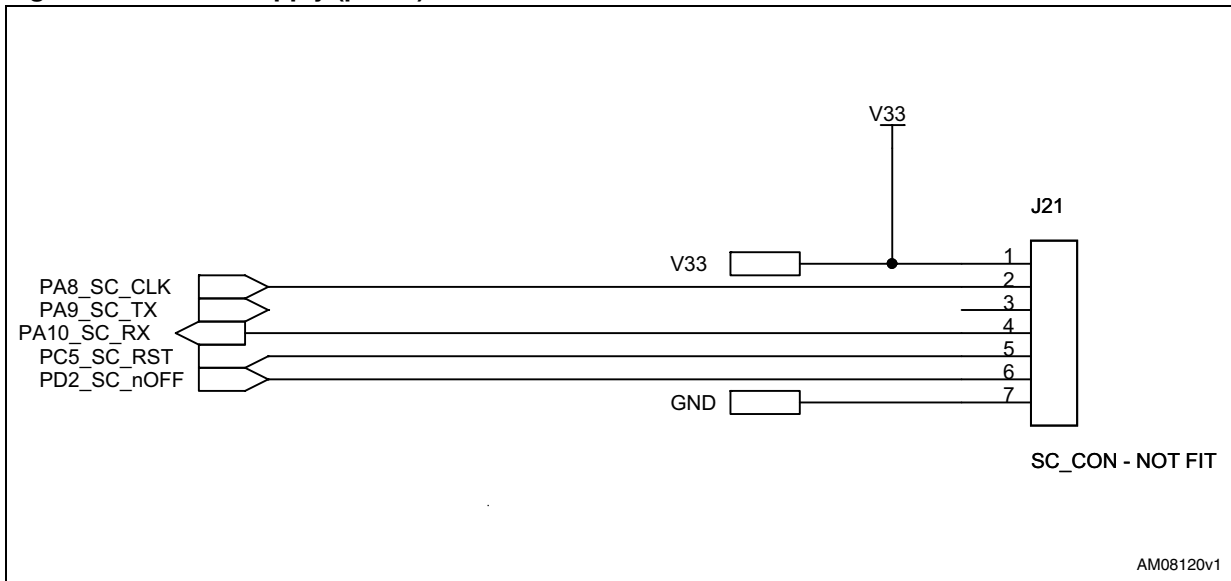


Figure 15. ZigBee module connector

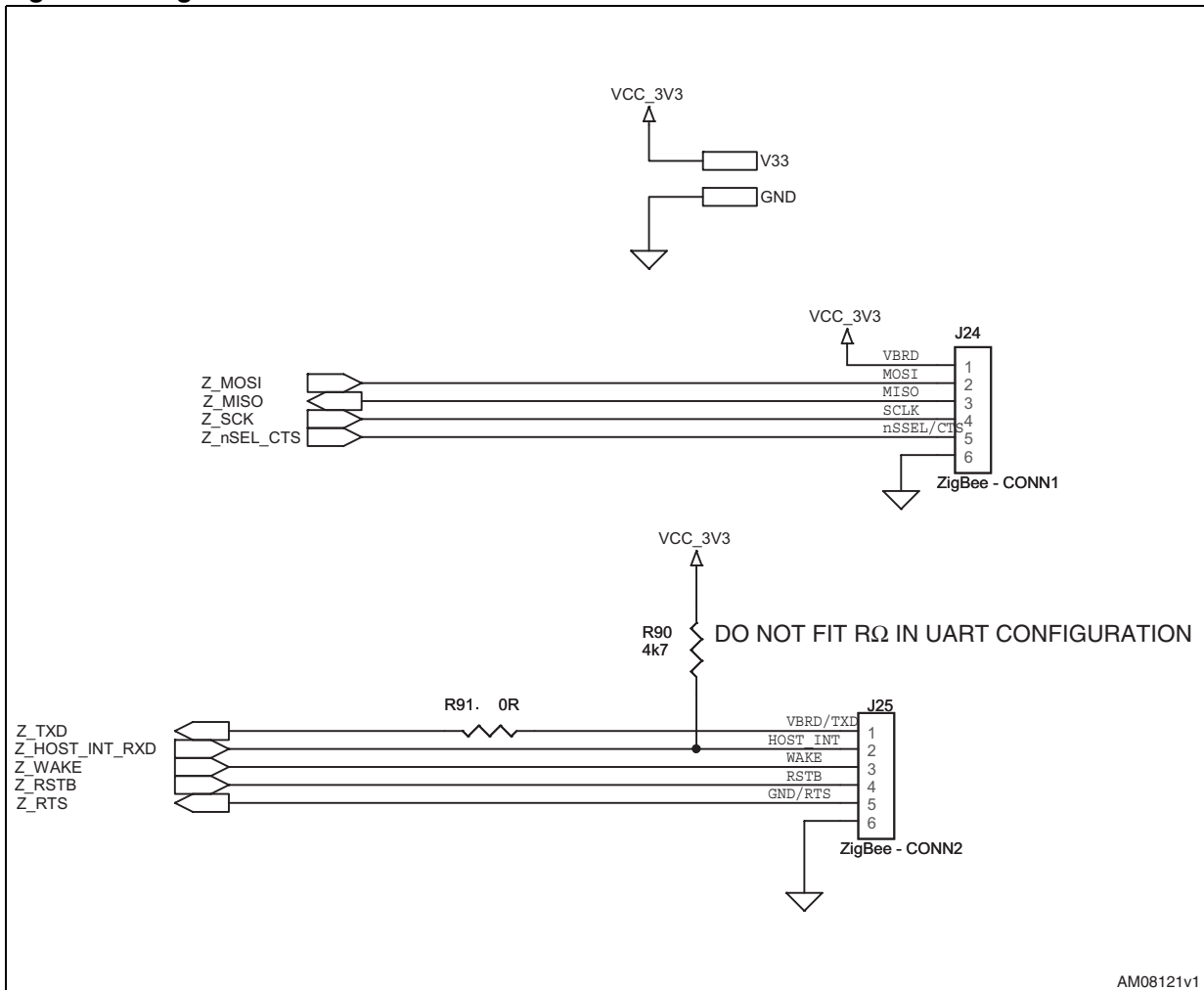


Figure 16. USB connector

