

## LDO PSRR Measurement Simplified

Sanjay Pithadia and Scot Lester

PMP - LP Linear Regulators

### ABSTRACT

This application report explains different methods of measuring the Power Supply Rejection Ratio (PSRR) of a Low-Dropout (LDO) regulator and includes the pros and cons of these measuring methods.

### What is PSRR?

Power Supply Rejection Ratio or Power Supply Ripple Rejection (PSRR) is a measure of a circuit's power supply's rejection expressed as a log ratio of output noise to input noise. PSRR provides a measure of how well a circuit rejects ripple, of various frequencies, injected at its input. The ripple can be either from the input supply such as a 50Hz/60Hz supply ripple, switching ripple from a DC/DC converter, or ripple due to the sharing of an input supply between different circuit blocks on the board. In the case of LDOs, PSRR is a measure of the regulated output voltage ripple compared to the input voltage ripple over a wide frequency range (10Hz to 1MHz is common) and is expressed in decibels (dB). The PSRR is very critical parameter in many audio and RF applications.

The basic equation for PSRR is:

$$\text{PSRR} = 20 \log \frac{\text{Ripple}_{\text{Input}}}{\text{Ripple}_{\text{Output}}} \quad (1)$$

Historically LDOs have poor high frequency PSRR performance, but currently TI has LDOs with PSRR > 40dB at 5MHz. One important point regarding the PSRR graphs in TI LDO datasheet is that the PSRR axis is inverted (See [Figure 1](#)). The PSRR is calculated as rejection so it should be a negative number; however, the graph shows it as positive number so that a higher number denotes higher noise rejection.

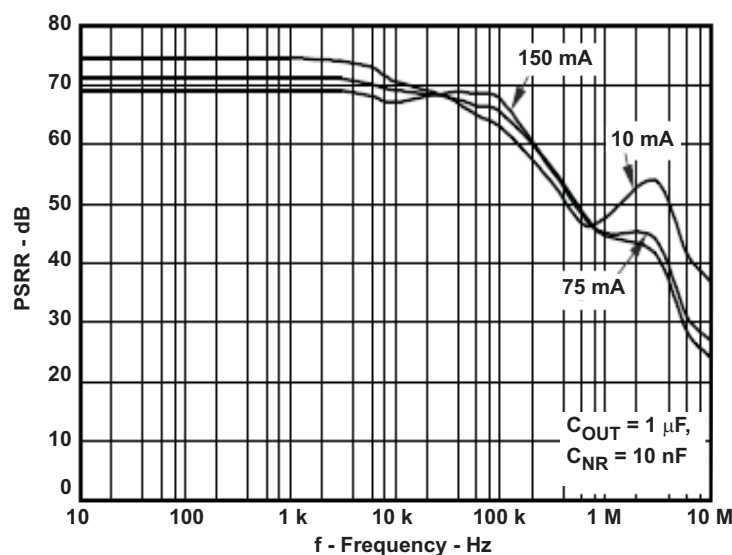


Figure 1. PSRR Graph of TPS717xx LDOs

## Measuring PSRR of LDO

The following sections explain different methods of measuring the PSRR of an LDO.

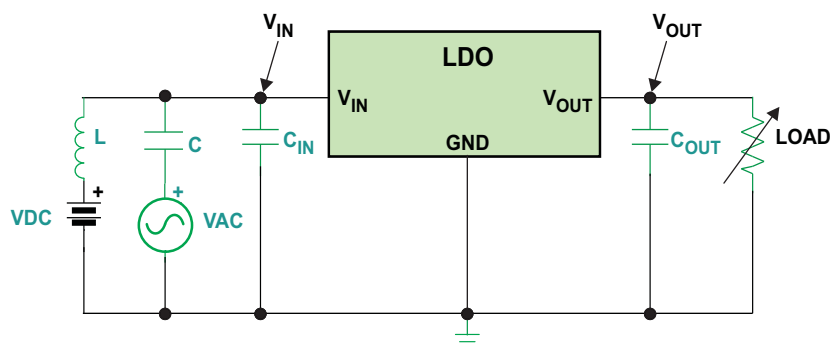
### 1. Measuring PSRR using LC summing node method:

The basic method of measuring PSRR is shown in Figure 2. In this method, DC voltage and AC voltages are summed together and applied at the input of the LDO. VDC is the operating point bias voltage and VAC is the noise source used in the test. Capacitor C prevents VAC from shoring VDC and inductor L prevents VDC from shoring VAC. So L and C are used for isolating both the sources, VDC and VAC, from each other.

The L and C will create a high pass filter for VAC which will limit how low in frequency we can measure the PSRR. The 3dB point of this filter is determined by Equation 2. Frequencies below the 3dB point will start to be attenuated which will make measurements more difficult. The highest frequency that can be measured is determined by the self resonant frequencies of the L and C components.

$$F_{\min} = 1 / 2\pi \sqrt{LC} \quad (2)$$

A drawback to this method is that it works well only for mid-range frequencies (approximately 1 kHz to 500 kHz).



**Figure 2. Basic Method of Measuring PSRR of LDO**

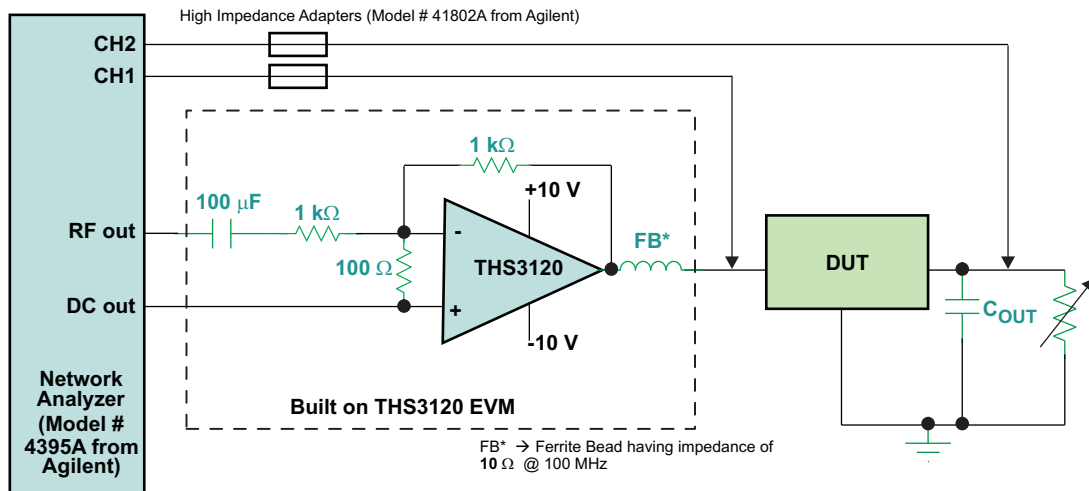
### 2. Measuring PSRR using summing amplifier

To improve the measurement of PSRR, a recommended method is described using a high-bandwidth amplifier as summing node to inject the signals and provides the isolation between VAC and VDC. This method is tested and verified using TPS72715 LDO and THS3120 high-speed amplifier from Texas Instruments. The basic set-up is shown in Figure 3. The PSRR is measured with a no-load condition and the resulting measured PSRR graph corresponds with the datasheet graph of PSRR.

Keep in mind the following while measuring the PSRR using this method:

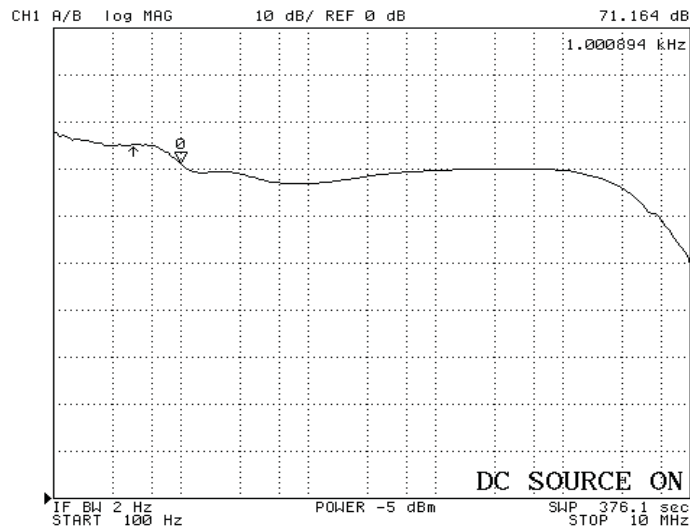
- The input capacitor of LDO should be removed before the measurement because this capacitor could cause the high-speed amplifier to go unstable.
- Vin and Vout should be measured with high-impedance probes (either scope or network analyzer) immediately at the Vin or Vout pins to minimize the set-up inductance effects.
- The test set-up should not have any long wires since this will add inductance and impact the results.
- While selecting the values of AC and DC inputs, the following conditions should be considered:
  - $VAC(\max) + VDC < V_{ABS}(\max)$  of LDO
  - $VDC - VAC > V_{UVLO}$  of LDO
 Also, the best results will be obtained if:
  - $VDC - VAC > V_{out} + V_{do} + 0.5$  where Vout is the output voltage of the LDO and Vdo is the specified drop out voltage at the operating point.
- At very high frequencies, the response of the amplifier will start to attenuate the VAC signal that is applied to the LDO. At some point, the attenuated VAC will be too small to measure on the output of the LDO.
- As load current increases, the open-loop output impedance of LDO decreases (Since a MOSFET output impedance is inversely proportional to the drain current), thus lowering the gain. Increasing the load current also pushes the output pole to higher frequencies, which increases the feedback

loop bandwidth. The net effect of increasing the load is therefore reduced PSRR at lower frequencies (because of reduced gain) along with increased PSRR at higher frequencies.



### Figure 3. Recommended Method of Measuring PSRR of LDO

Figure 4 shows the PSRR graph measured with this method.



#### Figure 4. PSRR Measured With Recommended Method

The THS3120 is suitable for measuring PSRR up to VDC = 5V, Frequency = 10MHz and  $I_{load} = 400mA$ .

## Measuring PSRR Using Oscilloscope

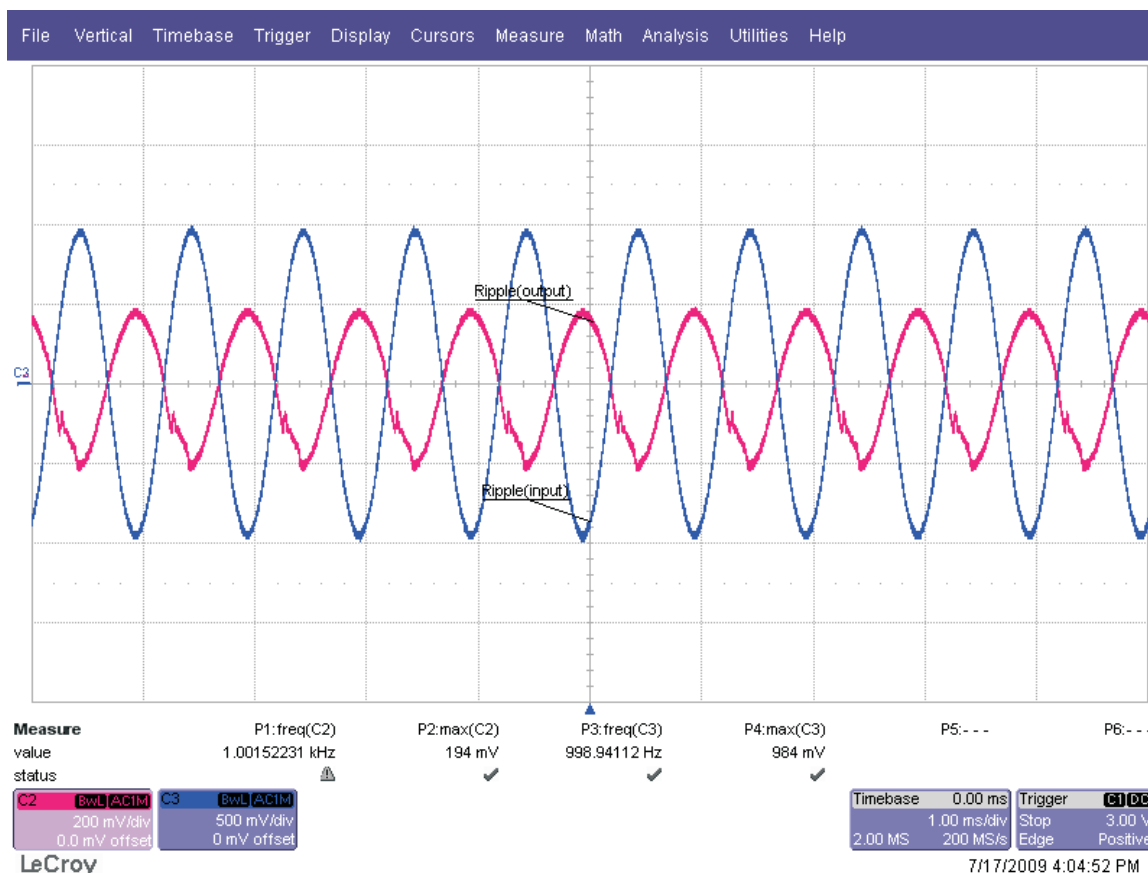
If the user does not have a network analyzer then there is a simpler but more cumbersome method which uses a signal generator, DC source and oscilloscope to measure the PSRR. An AC signal from signal generator is applied along with DC signal at the input of the LDO, as shown in either of the afore mentioned methods, and the output of the LDO is measured on an oscilloscope at different VAC frequencies. The PSRR is calculated using the Equation 1 where  $\text{Ripple}_{(\text{input})}$  is the amplitude of the input AC signal and  $\text{Ripple}_{(\text{output})}$  is the amplitude of output signal. This is then repeated at different frequencies of VAC to generate a piecemeal graph of PSRR.

This method can be used along with the set-ups described in the previous section. But this method is only good for LDOs with lower PSRR values due to resolution and sensitivity of oscilloscopes. Since most oscilloscopes can measure down to the millivolt range, the maximum range of PSRR that could realistically be measured using an oscilloscope is about 40dB–50dB.

Using the TPS78101EVM from Texas Instruments, the PSRR is measured using signal generator and oscilloscope. The input and output waveforms are as shown in Figure 5:

Test conditions are:

- V<sub>out</sub> = 3V
- I<sub>load</sub> = 150mA
- V<sub>AC</sub> = 1V (p-p) at 1kHz
- V<sub>DC</sub> = 4.3V dc



**Figure 5. Input and Output Waveforms for Measuring PSRR Using Oscilloscope**

And the PSRR is calculated from waveforms in Figure 5 is:

$$\text{Ripple}_{(\text{input})} = 984 \text{ mV}$$

$$\text{Ripple}_{(\text{output})} = 194 \text{ mV}$$

$$\text{PSRR} = 20 \log_{10}(\text{Ripple}_{(\text{input})} / \text{Ripple}_{(\text{output})}) = 20 \log_{10}(0.984/0.194) = 14.10\text{dB}$$

which closely matches the PSRR specified in the datasheet of TPS78101.

This application report shows various methods to measure the PSRR of an LDO and also explains different aspects which need to be considered while measuring PSRR.

## IMPORTANT NOTICE

Texas Instruments Incorporated and its subsidiaries (TI) reserve the right to make corrections, modifications, enhancements, improvements, and other changes to its products and services at any time and to discontinue any product or service without notice. Customers should obtain the latest relevant information before placing orders and should verify that such information is current and complete. All products are sold subject to TI's terms and conditions of sale supplied at the time of order acknowledgment.

TI warrants performance of its hardware products to the specifications applicable at the time of sale in accordance with TI's standard warranty. Testing and other quality control techniques are used to the extent TI deems necessary to support this warranty. Except where mandated by government requirements, testing of all parameters of each product is not necessarily performed.

TI assumes no liability for applications assistance or customer product design. Customers are responsible for their products and applications using TI components. To minimize the risks associated with customer products and applications, customers should provide adequate design and operating safeguards.

TI does not warrant or represent that any license, either express or implied, is granted under any TI patent right, copyright, mask work right, or other TI intellectual property right relating to any combination, machine, or process in which TI products or services are used. Information published by TI regarding third-party products or services does not constitute a license from TI to use such products or services or a warranty or endorsement thereof. Use of such information may require a license from a third party under the patents or other intellectual property of the third party, or a license from TI under the patents or other intellectual property of TI.

Reproduction of TI information in TI data books or data sheets is permissible only if reproduction is without alteration and is accompanied by all associated warranties, conditions, limitations, and notices. Reproduction of this information with alteration is an unfair and deceptive business practice. TI is not responsible or liable for such altered documentation. Information of third parties may be subject to additional restrictions.

Resale of TI products or services with statements different from or beyond the parameters stated by TI for that product or service voids all express and any implied warranties for the associated TI product or service and is an unfair and deceptive business practice. TI is not responsible or liable for any such statements.

TI products are not authorized for use in safety-critical applications (such as life support) where a failure of the TI product would reasonably be expected to cause severe personal injury or death, unless officers of the parties have executed an agreement specifically governing such use. Buyers represent that they have all necessary expertise in the safety and regulatory ramifications of their applications, and acknowledge and agree that they are solely responsible for all legal, regulatory and safety-related requirements concerning their products and any use of TI products in such safety-critical applications, notwithstanding any applications-related information or support that may be provided by TI. Further, Buyers must fully indemnify TI and its representatives against any damages arising out of the use of TI products in such safety-critical applications.

TI products are neither designed nor intended for use in military/aerospace applications or environments unless the TI products are specifically designated by TI as military-grade or "enhanced plastic." Only products designated by TI as military-grade meet military specifications. Buyers acknowledge and agree that any such use of TI products which TI has not designated as military-grade is solely at the Buyer's risk, and that they are solely responsible for compliance with all legal and regulatory requirements in connection with such use.

TI products are neither designed nor intended for use in automotive applications or environments unless the specific TI products are designated by TI as compliant with ISO/TS 16949 requirements. Buyers acknowledge and agree that, if they use any non-designated products in automotive applications, TI will not be responsible for any failure to meet such requirements.

Following are URLs where you can obtain information on other Texas Instruments products and application solutions:

### Products

Amplifiers	<a href="http://amplifier.ti.com">amplifier.ti.com</a>
Data Converters	<a href="http://dataconverter.ti.com">dataconverter.ti.com</a>
DLP® Products	<a href="http://www.dlp.com">www.dlp.com</a>
DSP	<a href="http://dsp.ti.com">dsp.ti.com</a>
Clocks and Timers	<a href="http://www.ti.com/clocks">www.ti.com/clocks</a>
Interface	<a href="http://interface.ti.com">interface.ti.com</a>
Logic	<a href="http://logic.ti.com">logic.ti.com</a>
Power Mgmt	<a href="http://power.ti.com">power.ti.com</a>
Microcontrollers	<a href="http://microcontroller.ti.com">microcontroller.ti.com</a>
RFID	<a href="http://www.ti-rfid.com">www.ti-rfid.com</a>
RF/IF and ZigBee® Solutions	<a href="http://www.ti.com/lprf">www.ti.com/lprf</a>

### Applications

Audio	<a href="http://www.ti.com/audio">www.ti.com/audio</a>
Automotive	<a href="http://www.ti.com/automotive">www.ti.com/automotive</a>
Broadband	<a href="http://www.ti.com/broadband">www.ti.com/broadband</a>
Digital Control	<a href="http://www.ti.com/digitalcontrol">www.ti.com/digitalcontrol</a>
Medical	<a href="http://www.ti.com/medical">www.ti.com/medical</a>
Military	<a href="http://www.ti.com/military">www.ti.com/military</a>
Optical Networking	<a href="http://www.ti.com/opticalnetwork">www.ti.com/opticalnetwork</a>
Security	<a href="http://www.ti.com/security">www.ti.com/security</a>
Telephony	<a href="http://www.ti.com/telephony">www.ti.com/telephony</a>
Video & Imaging	<a href="http://www.ti.com/video">www.ti.com/video</a>
Wireless	<a href="http://www.ti.com/wireless">www.ti.com/wireless</a>

Mailing Address: Texas Instruments, Post Office Box 655303, Dallas, Texas 75265  
Copyright © 2009, Texas Instruments Incorporated