

REVISION			
REV	DESCRIPTION	ECO	DATE
1	Update Note 7 Gold Spec		06-01-06
			TAP/ZT

- NOTES UNLESS OTHERWISE SPECIFIED:

1. FABRICATE 1AW IPC-6012, CLASS 2, CURRENT REVISION.
2. BOARD SHALL MEET THE INSPECTION CRITERIA OF IPC-A-6000 CLASS 2, CURRENT REVISION.
3. USE ARTWORK 454810AW CURRENT REV.

- 4 MATERIAL: ULTRALAM 2000. SEE LAYER STACK-UP BELOW.

- 5 FINISHED WEIGHT OF ALL COPPER LAYERS SHALL BE 1 OZ PER SQUARE FOOT NOMINAL.

- ## 6. DESMEAR HOLES AND VIAS.

- 7 FINISH: GOLD FINISH: GOLD PLATE IAW MIL-G-45204C, TYPE III, GRADE A, Class I, 50 micro inches  $\pm$  1.3 micro inches, KNOOP Hardness of 90 max., OVER 200 micro inches  $\pm$  5 micro inches NICKEL/QQ-N-290A, Class I, Grade G.

8. SILKSCREEN COMPONENT SIDE ONLY WITH NONCONDUCTIVE EPOXY INK. COLOR SHALL BE A CONTRASTING INK WITH RESPECT TO SOLDERMASK COLOR. DISTORTION OF SILKSCREEN IS ACCEPTABLE OVER TRACES. REMOVE EPOXY INK FROM SOLDER LANDS.

9. APPLY SOLDERMASK OVER BARE COPPER (SMOBC) IAW IPC-SM-840, TOP SIDE ONLY, USING LPI, COLOR CLEAR OR GREEN. SOLDERMASK OVER VIAS IS NOT ACCEPTABLE.

10. TANGENCY IS ACCEPTABLE.

11. REMOVAL OF NON-FUNCTIONAL PADS ON INTERNAL LAYERS IS ACCEPTABLE.

- 12 SUPPLIER LOGO AND LOT NUMBER/DATE CODE SHALL ONLY BE SILKSCREENED WITH NON-CONDUCTIVE EPOXY INK IN APPROX. LOCATION SHOWN.

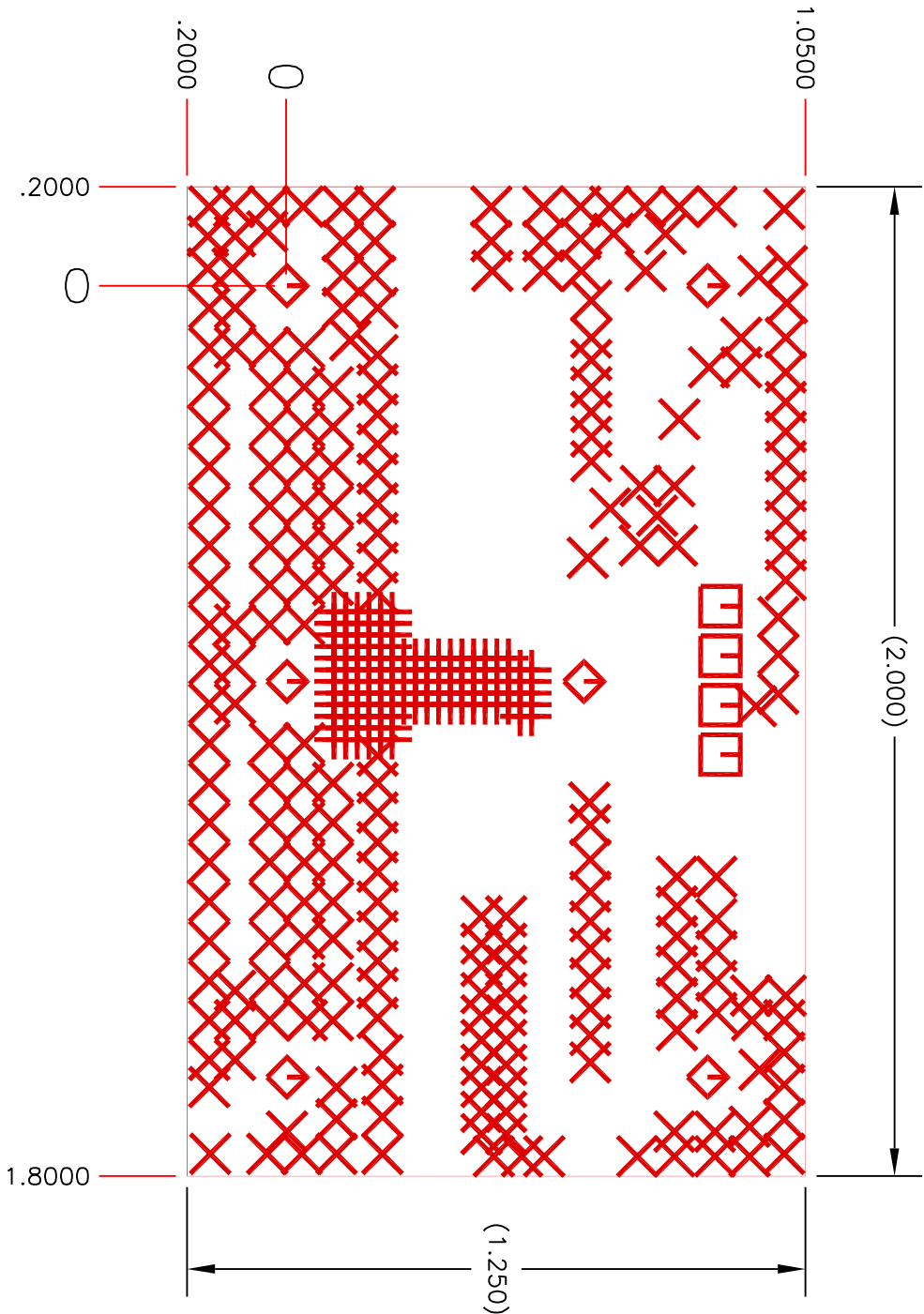
- 13 MARK ARTWORK 454810AW, CURRENT REV LEVEL APPROX. WHERE SHOWN.

- 14 SCORING PROCESS TO FOLLOW DETAIL "A" (SEE SHEET 2). CIRCUIT FABRICATOR TO BREAK ONE SUB-PANEL FROM EACH LOT TO ENSURE PROPER SCORING ACHIEVED

- 15 A MAXIMUM OF TWO (2) X-OUT ARE ALLOWED PER SUB-PANEL.

16. FABRICATION SHALL NOT ADD COPPER THIEVING ON ANY LAYER.

## COMPONENT SIDE



2 LAYER  
CROSS SECTION  
FILM SET

LAYER 1 - COMP SIDE

LAYER 2 - BOTTOM SIDE

CORE

1 OZ. CU

1 OZ. CU

1 OZ. CU

2 LAYER  
CROSS SECTION  
DIMENSIONAL TOLERANCE

HOLE SCHEDULE (ALL PLATED THRU DIAMETERS ARE AFTER PLATING)			
SYM	DESCRIPTION	PLATED THRU	QTY
+	$\phi .010 + .003 / - .010$ THRU	YES	132
X	$\phi .020 \pm .003$ THRU	YES	233
□	$\phi .042 \pm .003$ THRU	YES	4
◇	$\phi .102 \pm .003$ THRU	YES	6

[illegible]