

NOTES UNLESS OTHERWISE SPECIFIED:

1. FABRICATE IAW IPC-6012, CLASS 2, CURRENT REVISION.
2. BOARD SHALL MEET THE INSPECTION CRITERIA OF IPC-A-600 CLASS 2, CURRENT REVISION.
3. USE ARTWORK 453655AW REV --.

4 MATERIAL: FR4. SEE LAYER STACK-UP BELOW.

5 FINISHED WEIGHT OF ALL COPPER LAYERS SHALL BE 1 OZ. PER SQUARE FOOT NOMINAL.

6. DESMEAR HOLES AND VIAS.

7 FINISH: HOT-AIR LEVEL TIN-LEAD (HASL).

8. SILKSCREEN WITH NONCONDUCTIVE EPOXY INK.  
COLOR SHALL BE A CONTRASTING INK WITH RESPECT TO SOLDERMASK COLOR. DISTORTION OF SILKSCREEN IS ACCEPTABLE OVER TRACES. REMOVE EPOXY INK FROM SOLDER LANDS.

9. APPLY SOLDERMASK OVER BARE COPPER (SMOBC) IAW IPC-SM-840, BOTH SIDES, USING LPI, COLOR CLEAR OR GREEN. SOLDERMASK OVER VIAS IS NOT ACCEPTABLE.

10. TANGENCY IS ACCEPTABLE.

11. REMOVAL OF NON-FUNCTIONAL PADS ON INTERNAL LAYERS IS ACCEPTABLE.

12 SUPPLIER LOGO AND LOT NUMBER/DATE CODE SHALL ONLY BE SILKSCREENED WITH NON-CONDUCTIVE EPOXY INK IN APPROX. LOCATION SHOWN.

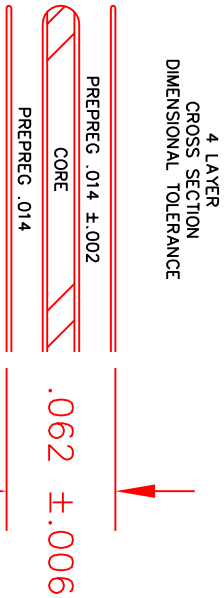
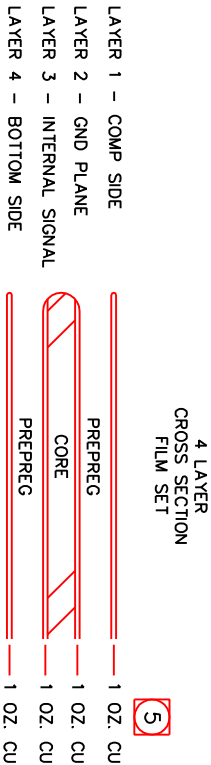
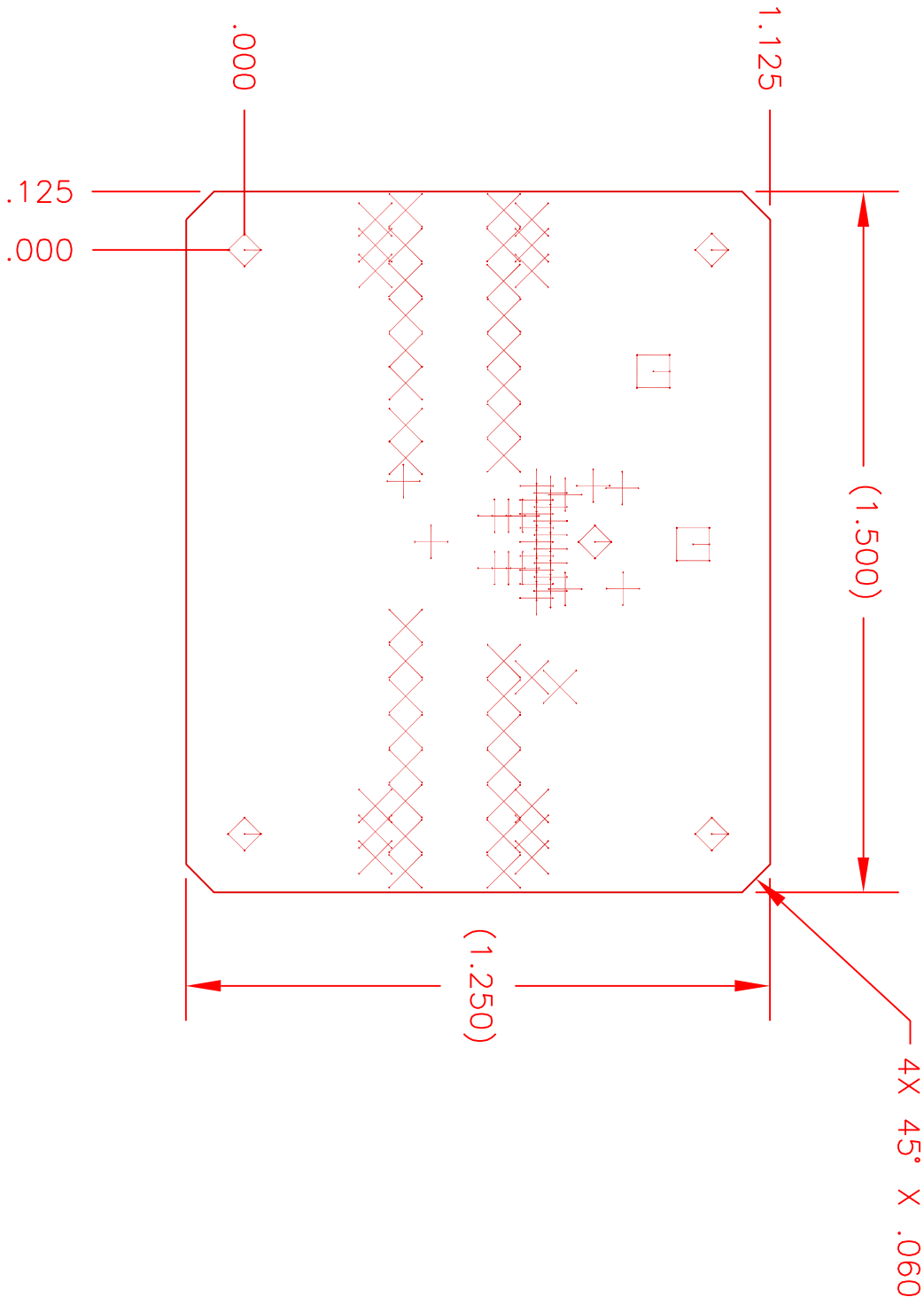
13 MARK ARTWORK 453655AW, CURRENT REV LEVEL APPROX. WHERE SHOWN.

14. ALL ROUTING ARE INDICATED BY HATCHED AREAS.

15 SCORING PROCESS TO FOLLOW DETAIL "A" ( SEE SHEET 2). CIRCUIT FABRICATOR TO BREAK ONE SUB-PANEL FROM EACH LOT TO ENSURE PROPER SCORING ACHIEVED.

16 A MAXIMUM OF TWO (2) X-OUT ARE ALLOWED PER SUB-PANEL.

COMPONENT SIDE



HOLE SCHEDULE (ALL PLATED THRU DIAMETERS ARE AFTER PLATING)				
SYM	DESCRIPTION	PLATED THRU	QTY	
+	Ø.010 +.003/- .010 THRU	YES	30	
X	Ø.020 ±.003 THRU	YES	45	
□	Ø.055 +.001/- .003 THRU	YES	2	
◇	Ø.102 ±.003 THRU	YES	5	

		REF	0	453246AW	PWB, RD43 CMOS SWITCH APPLICATION BOARD
		ITEM NO	PART OR IDENT NO	CAGE CODE	NOVENCATUURE OR DESCRIPTION
		QTY PER DASH NO			SPEC/STD
PARTS LIST OR MATERIAL					
UNLESS OTHERWISE SPECIFIED, DIMENSIONS ARE IN INCHES.					
TOLERANCES ON DIMENSIONS		ANGLES ± 0° 30'		COMMUNICATIONS, INC.	
MATERIAL:		FR 400		SMT JOSE, CALIFORNIA	
4		K. Kelsen		1-20-05	
7		K. Phillips		1-20-05	
FINAL PROTECTIVE FINISH:		DR			
7		CONT NO.			
SIZE		CAGE CODE		PRINTED CIRCUIT BOARD,	
D		14482		SOT89 EVAL. BRD.	
SCALE		NONE		453655PC	
W/O NO.		SHEET 1 OF 2			